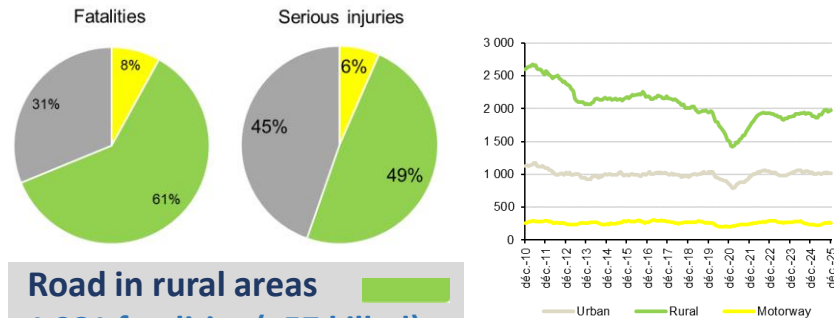


# PROVISIONAL RESULTS Victims according to the road network



**Road in rural areas**

1 981 fatalities (+57 killed)

8 100 serious injuries (+7 %)

**Roads in urban areas**

1 016 fatalities (-14 killed)

7 400 serious injuries (+2 %)

**Motorways**

263 fatalities (+24)

1 100 serious injuries (+2 %)

The BAAC file (Bulletin d'analyse des accidents corporels de la circulation routière) is recorded by the French police and gendarmerie. However, law enforcement is not systematically called in to deal with non-fatal accidents. An estimate of the number of bodily injury accidents and the number of people injured according to AIS severity scale is therefore produced with the support of the Université Gustave Eiffel. The provisional results for 2025 are :

	Injury accidents		Injured (all)		Serious injuries	Fatalities within 30 days
	BAAC	Estimate	BAAC	Estimate	Estimate	
2019	56 016	184 068	70 490	239 045	16 248	3 244
2024	51 058	180 026	64 535	235 610	15 924	3 193
2025p	51 688	186 396	65 239	243 673	16 565	3 260
<b>Evolution</b>	630	6 369	704	8 063	641	67
<b>2025 / 2024</b>	+1,2%	+3,5%	+1,1%	+3,4%	+4,0%	+2,1%
<b>Evolution</b>	-4 328	2 328	-5 251	4 628	317	16
<b>2025 / 2019</b>	-7,7%	+1,3%	-7,4%	+1,9%	+2,0%	+0,5%

More info : [www.onisr.securite-routiere.gouv.fr/en](http://www.onisr.securite-routiere.gouv.fr/en)

Source : French Road safety observatory (ONISR)  
– Key figures (provisional) Mainland France  
Estimates based on data on 19/01/2025



## ROAD SAFETY OBSERVATORY

2025

FRENCH

### Road safety in mainland France

#### Key figures (provisional results)

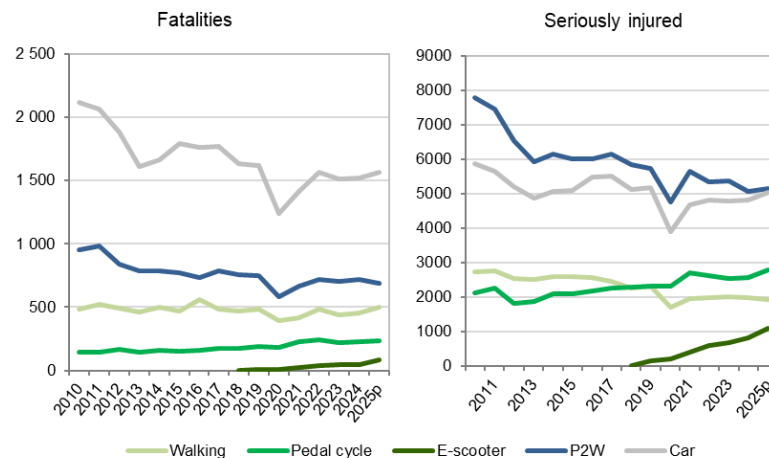
3 260 people died in France mainland in 2025 (+2,1 %)

3 193 in 2024

3 244 in 2019

244 000 people were injured (+3,4 %)

16 600 of whom were seriously injured (+4,0%)



#### Definitions

**Walking:** pedestrians on foot, inline skates, classic scooters

**Bicycle:** cyclists on mechanical or electric bikes

**E-scooter:** motorised personal mobility devices (electric scooters, gyropods, etc.)

**P2W:** powered two-wheelers (mopeds, 2-, 3-, 4-wheel scooters, motorbikes)

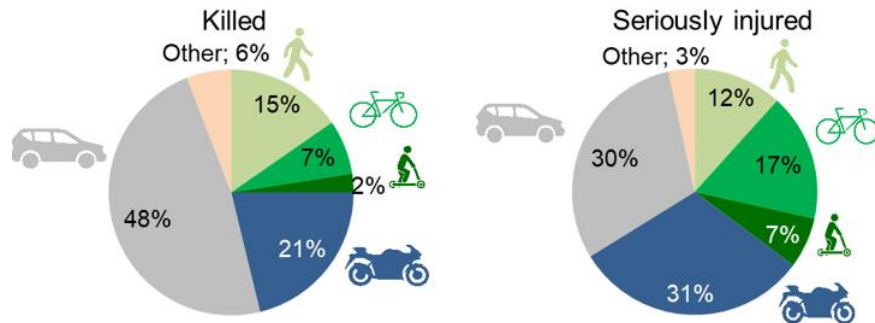
**Passenger car:** occupants of cars

## PROVISIONAL RESULTS

### Victims according to the mobility mode

Since 2020, the proportion of passenger car user fatalities has represented less than half of all fatalities (48%).

Vulnerable road users (pedestrians, cyclists, e-scooterists and PTW) account for 49% of deaths and 66% of serious injuries.



#### Pedestrians

**501 fatalities (+45 killed)**  
**1 900 serious injuries (-2 %)**

#### Cyclists

**234 fatalities (+10 killed)**  
**2 800 serious injuries (+8 %)**

#### E-scooter users

**80 fatalities (+35 killed)**  
**1 100 serious injuries (+33%)**

#### Car users

**1 563 fatalities (+45 killed)**  
**5 000 serious injuries (+4 %)**

#### P2W users

**691 fatalities (-29 killed)**  
**5 100 serious injuries (+1 %)**

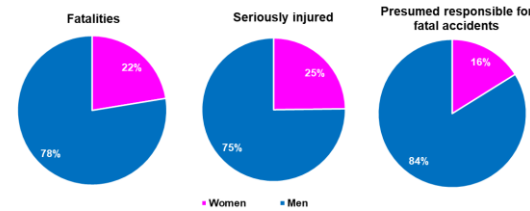
Evolutions are presented in comparison with 2024 final results

Source: French Road safety observatory (ONISR)  
– Key figures 2025 (provisional) ; Mainland France

## PROVISIONAL RESULTS

### Victims according to gender

In 2025 : **2 526** killed were **male** and **734** killed **female**.



**Men** represent :  
77% of fatalities  
75% of seriously injured  
84% of presumed responsible for fatal accidents

### Victims according to age

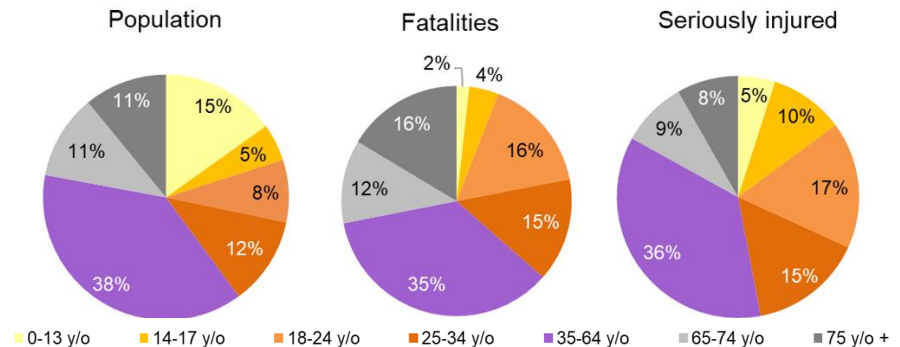
In 2025, **49 people were killed per million inhabitants** (killed/Mhab).

The populations most at risk of being killed are:

- 18-24 year-olds (95 killed/Mhab);
- 75 year-olds or over (73 killed/Mhab).
- 25-34 year-olds (61 killed/Mhab);

The populations most at risk of serious injury are:

- 14-17 and 18-24 year-olds (twice the average risk);
- 25-34 year-olds (1.3 times greater than the average).



#### 0-13 y/o

**58 fatalities (+12 killed)**  
**800 serious injuries (+13%)**

#### 18-24 y/o

**523 fatalities (-6 killed)**  
**2 800 serious injuries (+1%)**

#### 14-17 y/o

**135 fatalities (+41 killed)**  
**1 600 serious injuries (+4%)**

#### 75 y/o and over

**534 fatalities (stable)**  
**1 400 serious injuries (+3 %)**

Sources: ONISR – Key figures 2025 (provisional) ; Mainland France  
Insee – Estimated 2025 population on January 1st.