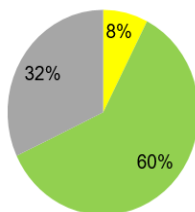


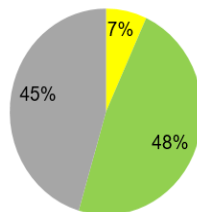
## Victims according to the road network



Fatalities



Seriously injured



### Road in rural areas

**1,928 fatalities (+51 killed)**  
**7,600 seriously injured (-1%)**

### Roads in urban areas

**1,020 fatalities (-1 killed)**  
**7,200 seriously injured (-1%)**

### Motorways

**242 fatalities (-27 killed)**  
**1,100 seriously injured (+1%)**

The BAAC file (Bulletin d'analyse des accidents corporels de la circulation routière) is recorded by the French police and gendarmerie. However, law enforcement is not systematically called in to deal with non-fatal accidents. An estimate of the number of bodily injury accidents and the number of people injured according to AIS severity scale is therefore produced with the support of the Université Gustave Eiffel. The quasi-definitive results for 2024 are :

	Injury accidents		Injured (all)		Serious injuries (MAIS3+)	Fatalities within 30 days
	BAAC	Estimate	BAAC	Estimate	Estimate	
2019	56 016	184 068	70 490	239 045	16 248	3 244
2023	51 641	181 170	64 674	234 836	15 936	3 167
2024p	50 996	178 132	64 474	233 071	15 842	3 190
Evolution	-645	-3 038	-200	-1 765	-94	23
2024 / 2023	-1,2%	-1,7%	-0,3%	-0,8%	-0,6%	+0,7%
Evolution	-5 020	-5 936	-6 016	-5 973	-406	-54
2024 / 2019	-9,0%	-3,2%	-8,5%	-2,5%	-2,5%	-1,7%

More info : [www.onisr.securite-routiere.gouv.fr/en](http://www.onisr.securite-routiere.gouv.fr/en)

Source: French Road safety observatory (ONISR)  
– Key figures (provisional) Mainland France  
Estimates based on data on 21/01/2025



## ROAD SAFETY OBSERVATORY

FRENCH

2024

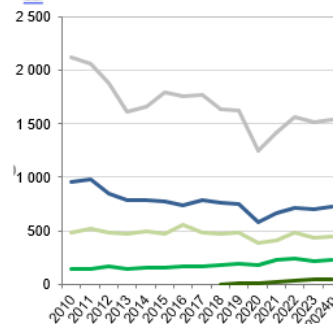
## Road safety in mainland France

### Key figures (provisional results)

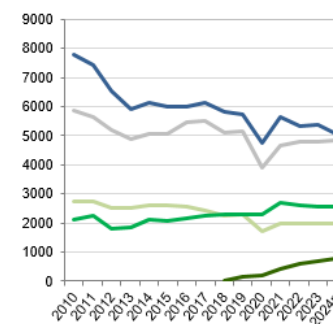
**3,190 people died in mainland France in 2024 (+0,7 %)**  
**(compared to 3,167 in 2023 and 3,244 in 2019)**  
**233,000 people were injured (-0,8 %),**  
**16,000 of whom were seriously injured (-0,6 %)**



Fatalities



Seriously injured



Walking Bicycle e-scooter P2W Passenger car

### Definitions

**Walking:** pedestrians on foot, inline skates, classic scooters

**Bicycle:** cyclists on mechanical or electric bikes

**E-scooter:** motorised personal mobility devices (electric scooters, gyropods, etc.)

**P2W:** powered two-wheelers (mopeds, 2-, 3-, 4-wheel scooters, motorbikes)

**Passenger car:** occupants of cars



GOUVERNEMENT  
Liberté  
Égalité  
Fraternité

SÉCURITÉ  
ROUTIÈRE  
VIVRE  
ENSEMBLE

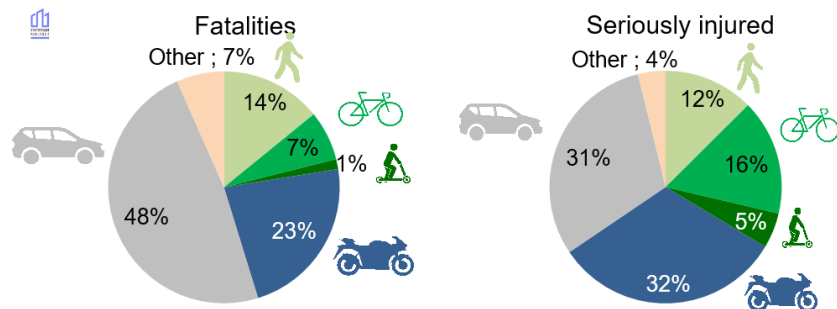


January 30th, 2025

## Victims according to the mobility mode

Since 2020, the proportion of passenger car user fatalities has represented less than half of all fatalities (48%).

Vulnerable road users (pedestrians, cyclists, e-scooterists and PTW) account for 45% of deaths and 65% of serious injuries.



### Pedestrians

**451 fatalities (+12 killed)**  
**2,000 seriously injured (-1%)**

### Cyclists

**222 fatalities (+1 killed)**  
**2,500 seriously injured (stable)**

### E-scooter users

**44 fatalities (stable)**  
**780 seriously injured (+16%)**

### Passenger cars users

**1,535 fatalities (+23 killed)**  
**4,800 seriously injured (+1%)**

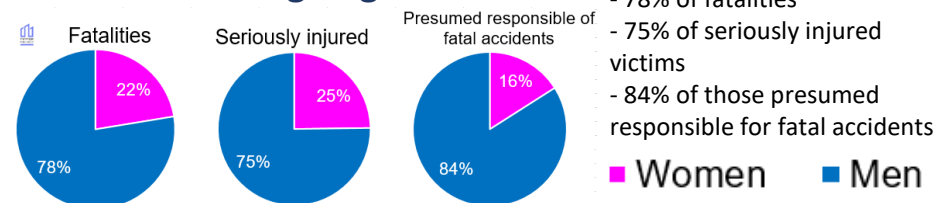
### P2W users

**726 fatalities (+20 killed)**  
**5,100 seriously injured (-6%)**

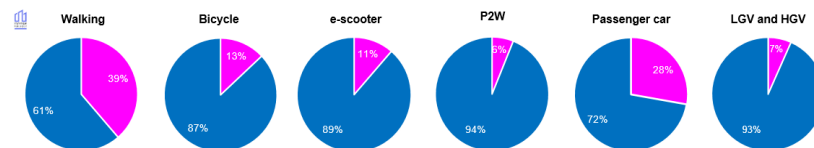
Evolutions are presented in comparison with 2023

Source: French Road safety observatory (ONISR)  
– Key figures 2024 (provisional) ; Mainland France

## Victims according to gender



### Fatality ratio M/W



## Victims according to age

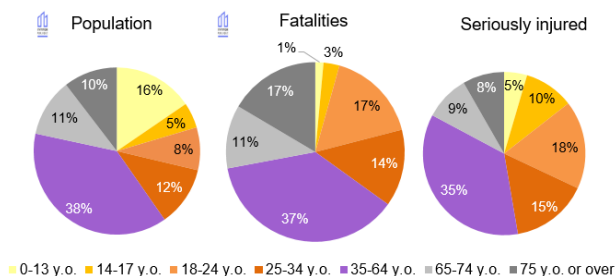
In 2024, **48 people were killed per million inhabitants** (killed/Mhab).

The populations most at risk of being killed are:

- 18-24 year-olds (97 killed/Mhab);
- 25-34 year-olds (58 killed/Mhab);
- 75 year-olds or over (76 killed/Mhab).

The populations most at risk of serious injury are:

- 14-17 and 18-24 year-olds (twice the average risk);
- 25-34 year-olds (1.3 times greater than the average).



### 14-17 year-olds

**92 fatalities (-24 killed)**  
**1,600 seriously injured (-1%)**

### 25-34 year-olds

**443 fatalities (-22 killed)**  
**2,400 seriously injured (-3%)**

### 18-24 year-olds

**531 fatalities (+34 killed)**  
**2,800 seriously injured (-1%)**

### 75 year-olds or over

**526 fatalities (+9 killed)**  
**1,300 seriously injured (+7%)**

Sources: ONISR – Key figures 2024 (provisional) ; Mainland France  
Insee – Estimated 2024 population on January 1st.