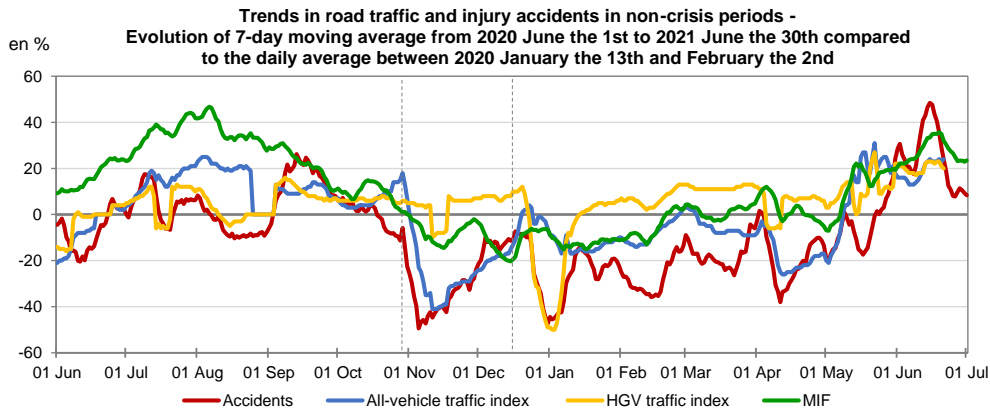


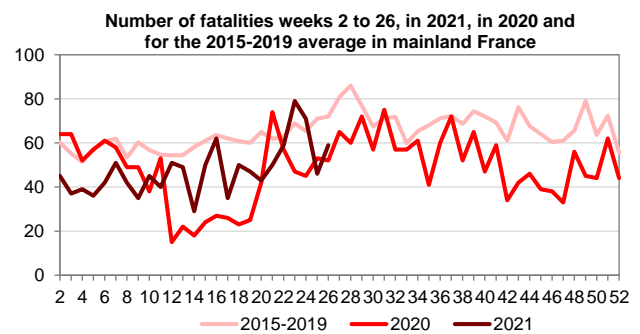
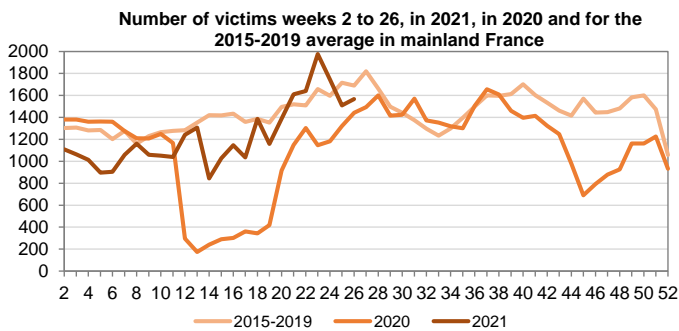
Impact monitoring of the health crisis - Second quarter of 2021 (1 April - 30 June)

As part of the health crisis linked to Covid-19, in mainland France, from the 3rd April to the 2nd May, travel is limited to 10 km. From the 3rd May, a curfew is implemented from 7pm to 6am, first reduced from 9pm to 6am from the 19th May. It was then reduced from 11pm to 6am from the 9th June and since the 20th June there is no more curfew in mainland France.

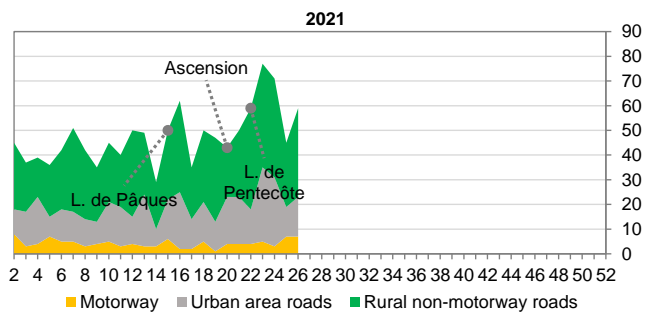
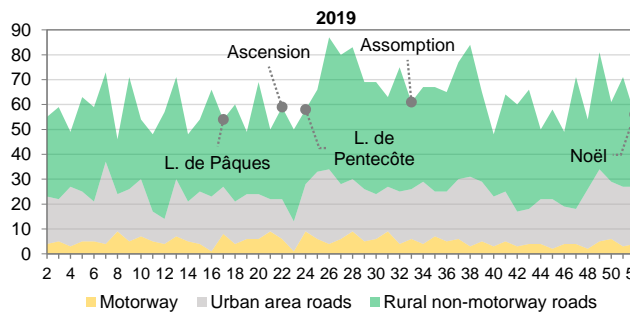
In April 2021, during the trips restrictions, traffic drops again, but the number of speed violation messages (MIF) does not follow the traffic trend and remains stable, suggesting more frequent speed violation. From May onwards, traffic and the number of MIFs continue to increase, and accident rates also start to rise again, with a peak in mid-June (+40% compared to the pre-crisis reference).



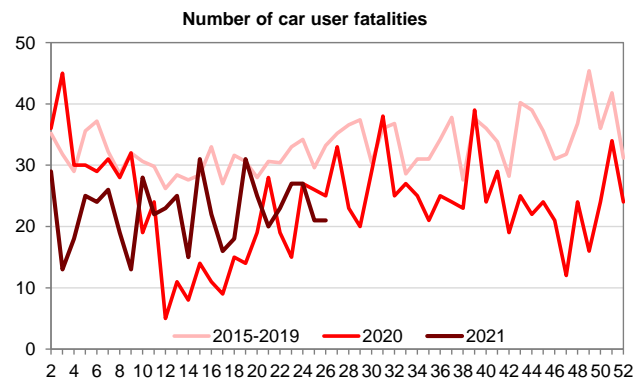
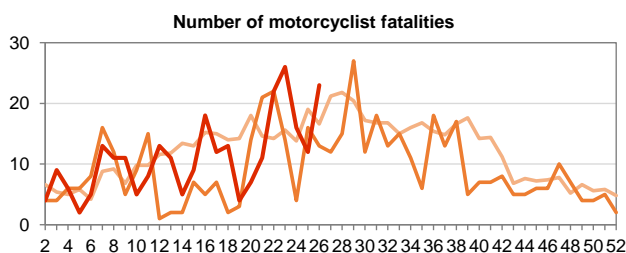
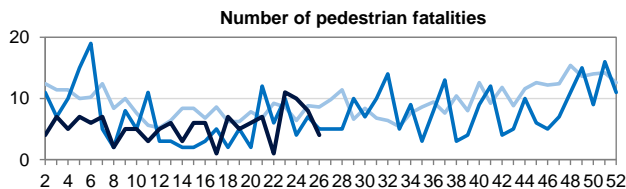
Sources: ONISR - definitive data labelled until 2020, provisional data for 2021, as of 9/07/2021
Cerema - Road traffic index (national conceded network) cumulative 7 days sliding, available on 4/07/2021
DSR - provisional infraction messages (MIF), as of 12/07/2021



Fatalities by road environment per week, 2nd to 26th week in mainland France



Fatalities by users categories in 2021, in 2020 and for 2015-2019 average, per week in mainland France

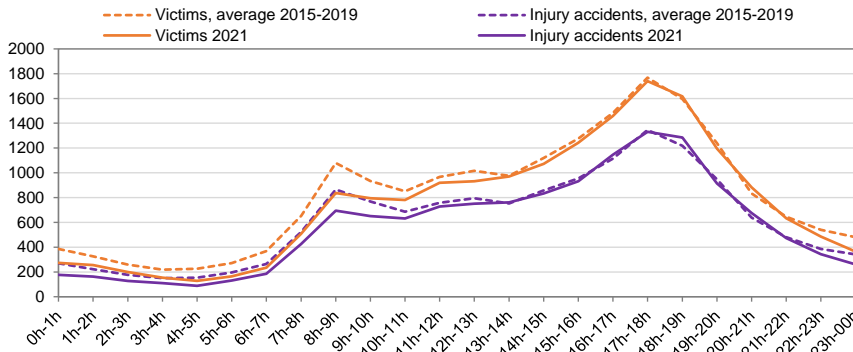


In the second quarter of 2021, car user fatalities are lower than the average for the second quarter of 2015-2019 average but higher than the second quarter of 2020, in contrast to pedestrian and motorcyclist fatalities which are equivalent or higher than the previous years.

Data source : ONISR - Data on accidents involving injuries recorded by police forces - Geographical area : France mainland
Labelled series (definitive until 2020), 2021 estimate based on data as of 9/07/2021

Focus on the second quarter of 2021, 2020, and on average 2015-2019, France mainland

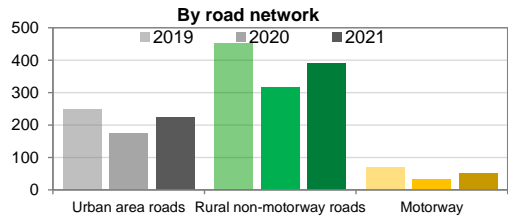
Cumulative number of injury accidents and victims (fatalities+injured) from April to June in mainland France



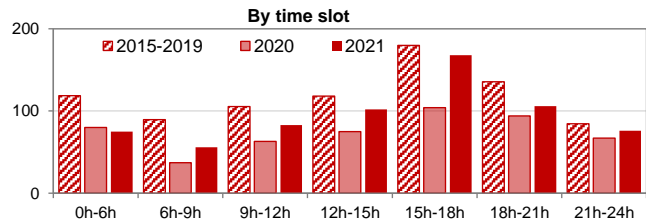
April to June	Injury accidents	Victims	of which fatalities
2021	13 839	17 864	671
2015-2019	14 866	19 511	935
Difference	-1 027	-1 647	-264
Variation	-7%	-8%	-28%

The **trips restrictions** imposed in the 2nd quarter of 2021 lead to a **greater decrease in the number of fatalities than in the number of accidents or victims.**

Number of fatalities in the 2nd quarter for 2021, 2020, and 2015-2019 average, in France mainland

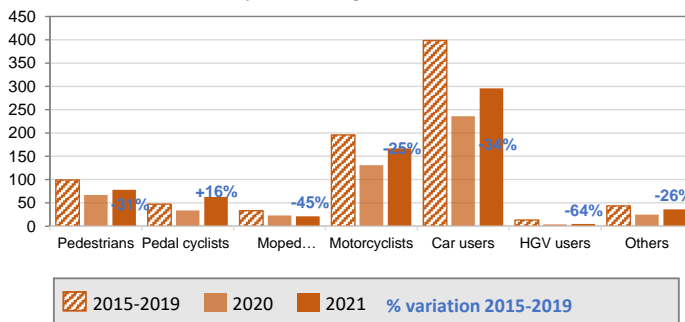


* due to the introduction of 80km/h on the rural non-motorway roads in 2018, the comparison is with the year 2019.



Number of fatalities in the 2nd quarter for 2021, 2020, and 2015-2019 average, in France mainland

By user categories



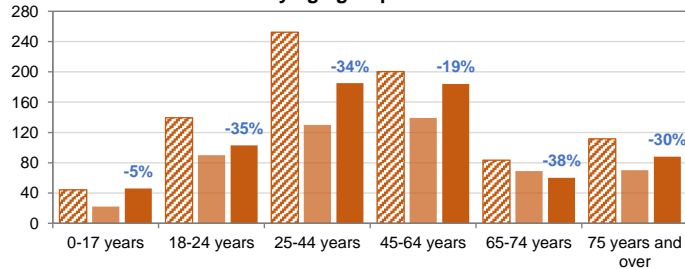
Overall fatalities decline by **-28%** during the period from April to June 2021 compared to the pre-pandemic 5-year average.

Fatalities among **car user and motorcyclist contributed the most to the decrease** (2/3 and 1/6 respectively). Pedestrian fatalities remain below the 2015-2019 average (-31%). **Cyclist fatalities are increasing** (+16%).

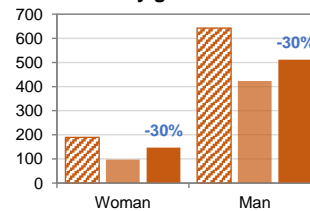
The decrease in fatalities among people aged 65-74 (-38%), 18-24 (-35%), and 25-44 (-34%) are greater than the overall decrease, and account respectively for 1/7, 1/5, and 2/5 on the decrease in fatalities.

Road fatalities in the 2nd quarter of 2021 decrease in the same proportions for women and men compared to the years 2015-2019.

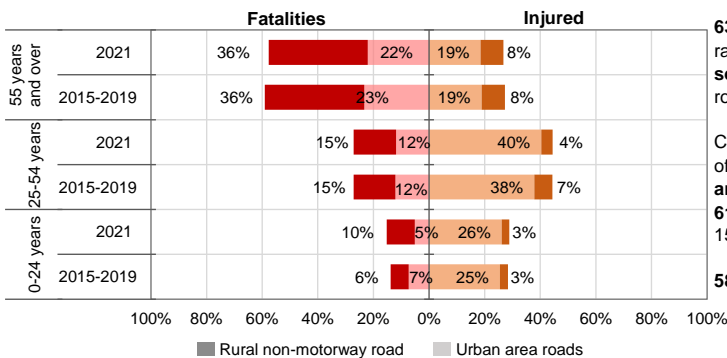
By age group



By gender



Cyclists killed and injured in the 2nd quarter for 2021 and 2015-2019 average, in France mainland



63 cyclists were killed in the second quarter of 2021 (25 in urban area roads and 38 rural roads) compared with an average of 47 killed in the second quarter of 2015-2019 (20 on urban area roads and 27 on rural roads).

Cyclist fatalities **on rural roads** increased by **+41%** in the second quarter of 2021 compared with the 2015-2019 average and by **+25% on urban area roads.**

61% of cyclists killed this quarter were killed on rural roads, while 15% of cyclists injured were recorded by the police forces.

58% of cyclists killed were aged 55 or over.

Data source : ONISR - Data on accidents involving injuries recorded by police forces - Geographical area : France mainland
Labelled series (definitive until 2020), 2021 estimate based on data as of 9/07/2021