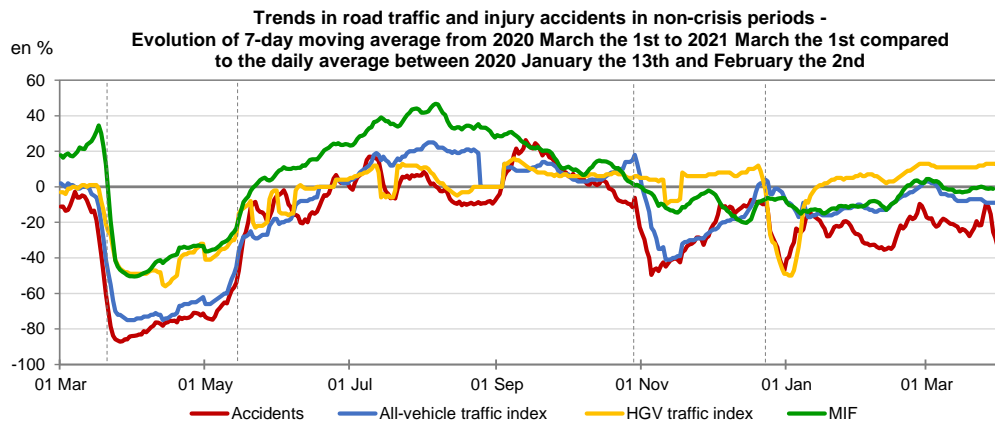


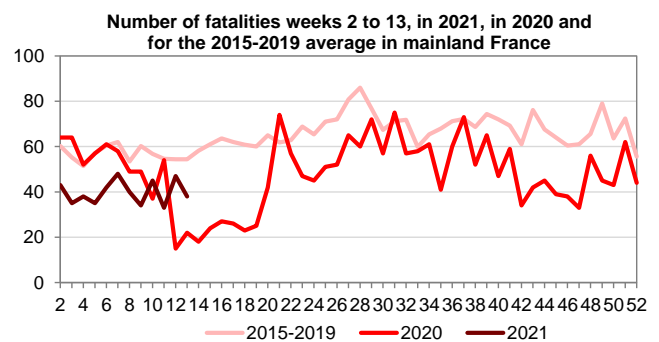
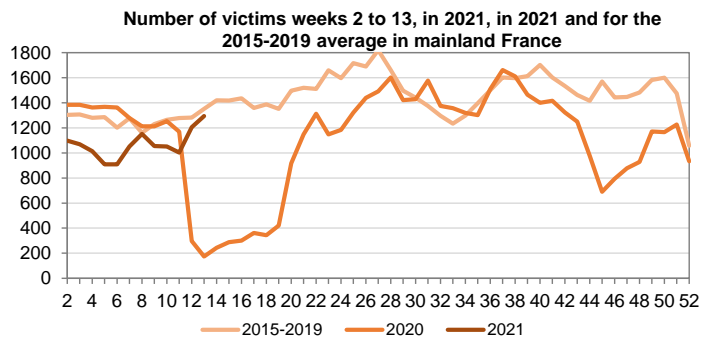
Impact monitoring of the health crisis - First quarter of 2021 (1 January - 31 March)

As part of the health crisis linked to Covid-19, a curfew is in place in mainland France throughout the first quarter of 2021 and teleworking is strongly recommended. Since 20 March, travel has been limited to 10 km in 16 then 19 counties.

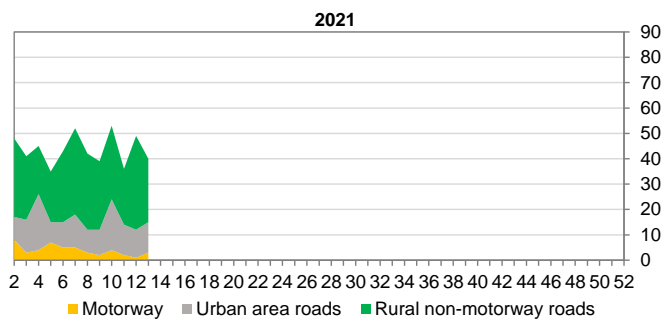
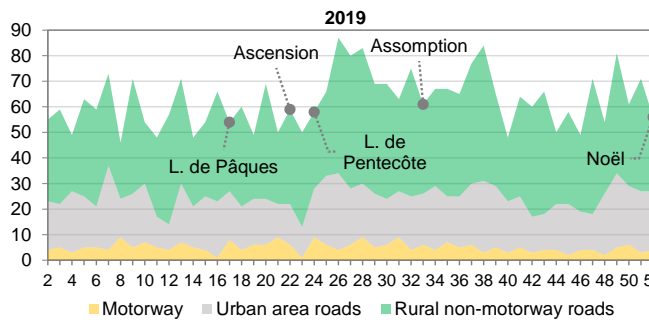
Since the beginning of 2021, the accident rate has remained below the January 2020 level, while traffic has returned to the January 2020 level in the second half of February. Since the March 2021 travel restrictions, traffic is falling again, but the number of speed violation messages is not following the traffic trend and remains stable, suggesting more frequent speeding.



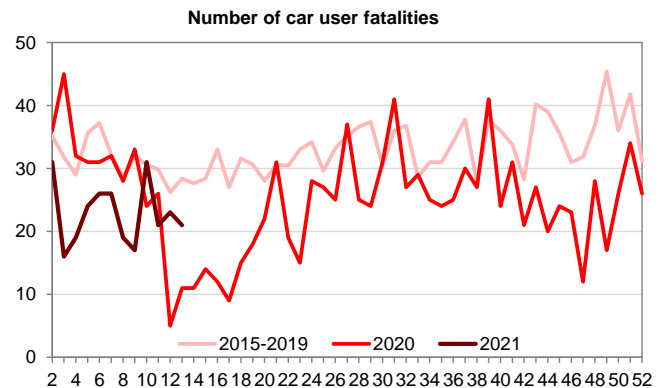
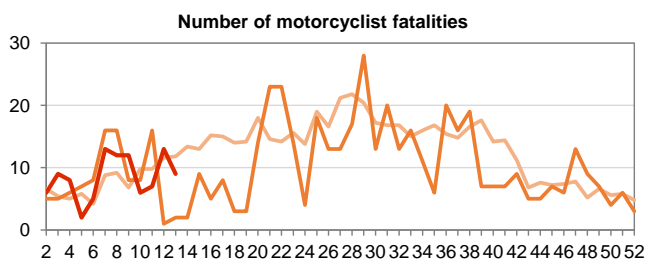
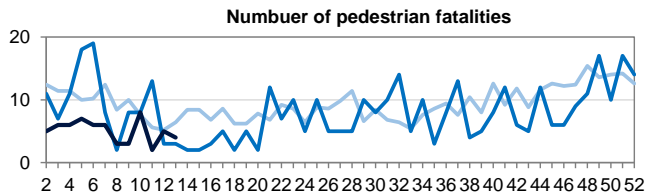
Sources : ONISR - definitive data labelled until 2019, provisional data for 2020 and 2021, as of 8/04/2021
 Cerema - Road traffic index (national conceded network) cumulative 7 days sliding, available on 8/04/2021
 DSR - provisional infraction messages (MIF), as of 6/04/2021



Fatalities by road environment per week, 2nd to 13th week in mainland France



Fatalities by users categories in 2021, in 2020 and for 2015-2019 average, per week in mainland France

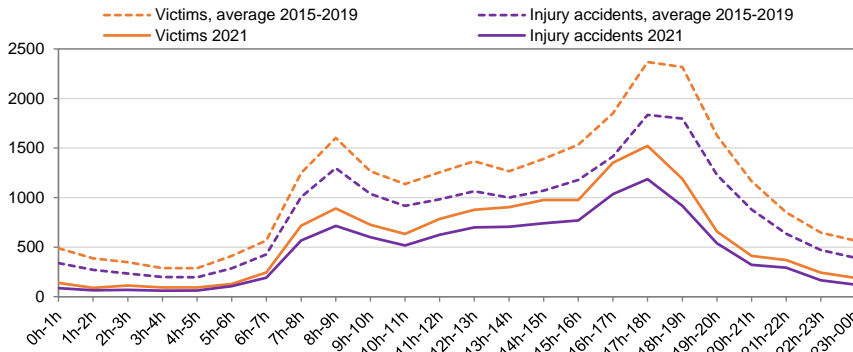


In the first quarter of 2021, car user and pedestrian fatalities are fewer than the average for the first quarters of 2015-2019 and the first quarter of 2020, while motorcyclist fatalities tend to be equivalent to previous years.

Data source : ONISR - Data on accidents involving injuries recorded by police forces - Geographical area : France mainland
 Labelled series (definitive until 2019, quasi-definitive 2020), 2021 estimate based on data as of 08/04/2021

Focus on the first quarters of 2021, 2020, and on average 2015-2019, France mainland

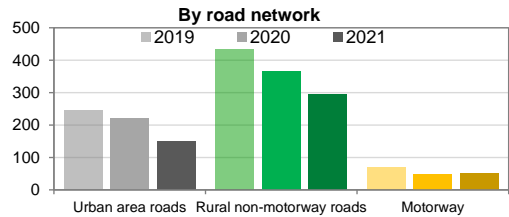
Number of injury accidents and victims (fatalities+injured) for the cumulative from January to March in mainland France



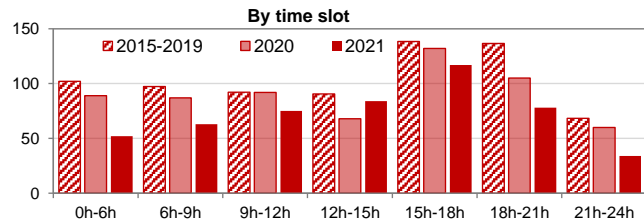
January to March	Injury accidents	Victims	of which fatalities
2021	11 161	14 317	558
2015-2019	13 157	17 136	784
Difference	-1 996	-2 819	-226
Variation	-15%	-16%	-29%

The curfew imposed in the first quarter of 2021 leads to the number of fatalities falling more sharply than the number of victims, in contrast to what was observed during the first containment in March-April 2020.

Number of fatalities in the 1st quarter for 2021, 2020, and average 2015-2019, in France mainland

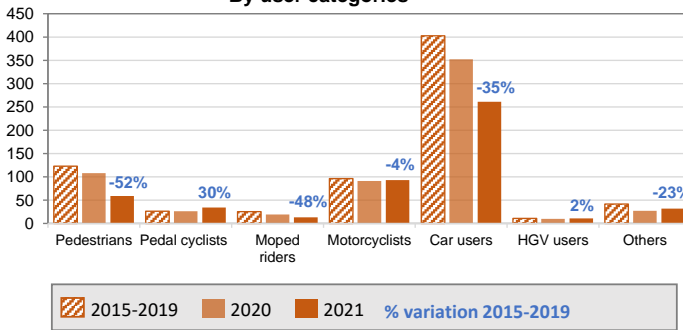


* due to the introduction of 80km/h on the rural non-motorway roads in 2018, the comparison is with the year 2019.



Number of fatalities in the 1st quarter for 2021, 2020, and average 2015-2019, in France mainland

By user categories



Overall fatalities decreased by -29% during the period from January to March 2021 compared to the average of the last 5 years.

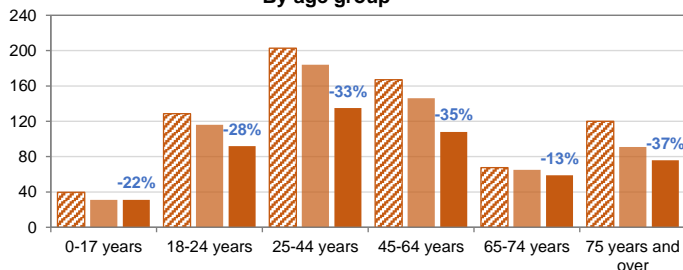
Fatalities among car users and pedestrians contributed the most to the decrease (1/3 and 2/3 respectively). Motorcyclists fatalities are stable (-4%).

Fatalities among cyclists are increasing (+30%).

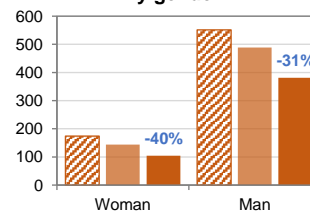
The decrease in fatalities among people over 75 (-37%), 45-64 (-35%) and 25-44 (-33%) are greater than the overall decrease, and account for one fifth, one quarter and one third respectively of the fewer deaths.

Women's fatalities, which are much lower than men's, fell even more (-40%) than men's (-31%). This decrease represents more than 1/4 of the overall decrease.

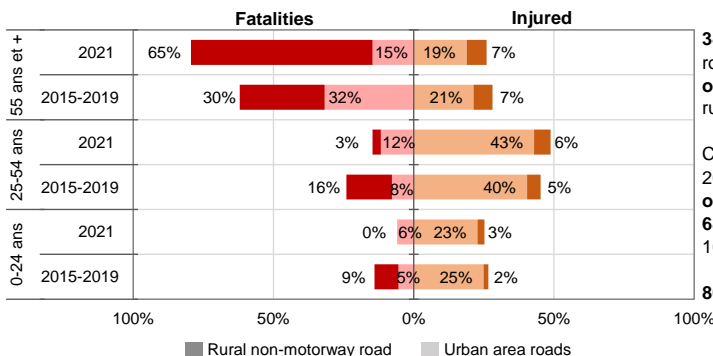
By age group



By gender



Cyclists killed and injured in the 1st quarter for 2021 and average 2015-2019, in France mainland



34 cyclists were killed in the first quarter of 2021 (11 on urban area roads and 23 on rural roads) compared with an average of 26 killed over the first quarters of 2015-2019 (12 on urban area roads and 14 on rural roads).

Cyclist fatalities on rural roads increased by 64% in the first quarter of 2021 compared with the 2015-2019 average, whereas they were stable on urban area roads.

68% of cyclists killed this quarter were killed on rural roads, while 16% of cyclists injured were recorded by the police forces.

80% of cyclists killed were aged 55 or over

Data source : ONISR - Data on accidents involving injuries recorded by police forces - Geographical area : France mainland
Labelled series (definitive until 2019, quasi-definitive 2020), 2021 estimate based on data as of 08/04/2021