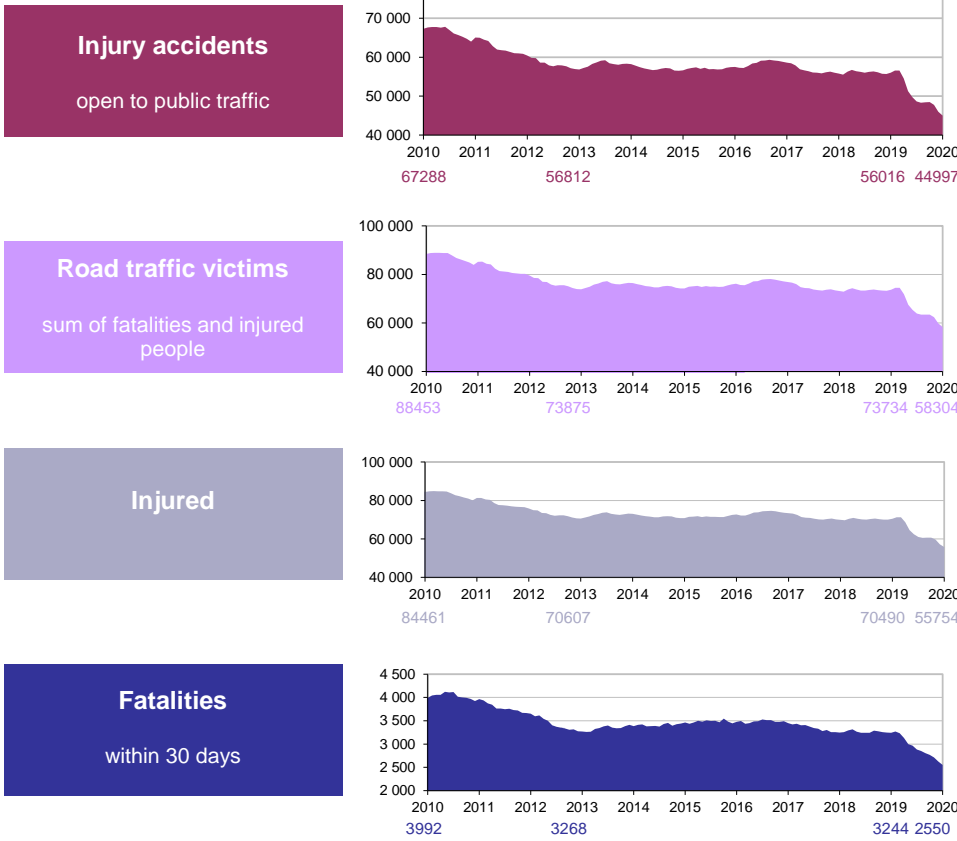


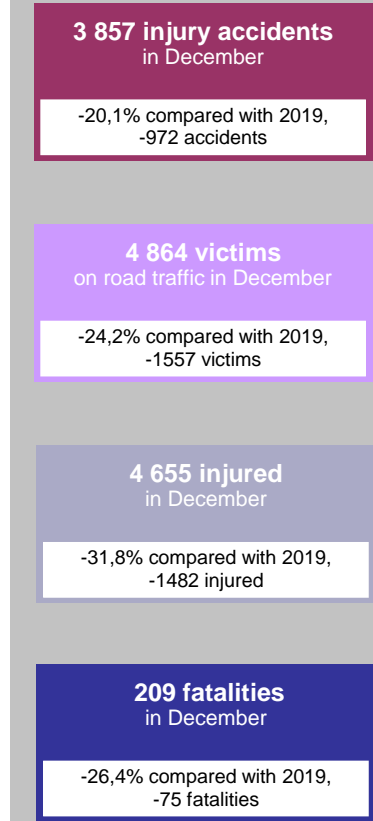
As part of the implementation of the new information system, data on hospitalised injuries are not disseminated because they are incomplete

209 people died on the roads in December 2020, 75 fewer than in December 2019. The estimated number of fatalities is lower than last year for car users (112 killed or 38 less) and powered two wheelers (21 killed or 27 less). The number of pedestrians (52 killed) and cyclists (12 killed) fatalities is stable.

Cumulative rolling 12 months



Month report



2 550 fatalities these last twelve months
694 fewer fatalities (-21,4%)

55 754 injured these last twelve months
14736 fewer injured (-20,9%)

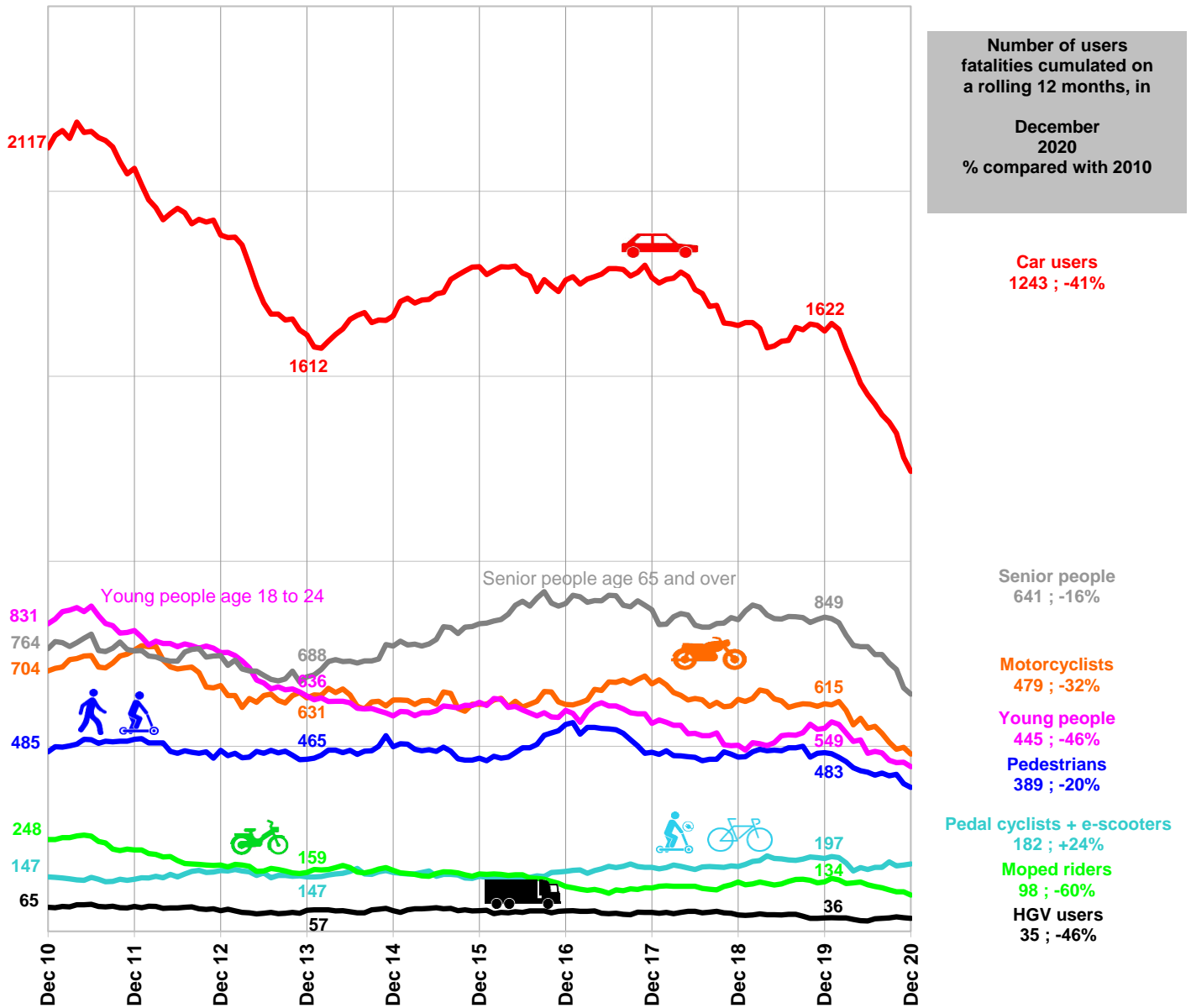
**CUMULATIVE
12 MONTHS**

FROM JANUARY 2020 TO DECEMBER 2020
compared with cumulative 12 months
FROM JANUARY 2019 TO DECEMBER 2019

44 997
Injury accidents
these last twelve months
11019 fewer accidents (-19,7%)

58 304 victims
these last twelve months
15430 fewer victims (-20,9%)

Development of the number of users fatalities cumulated on a rolling 12 months



Cumulative 12 months comparaison Jan.2020-.2020 with .2019-Nov.2020

In the context of the health crisis at Covid19 , a second containment was put in place from 30 October 2020.

In December 2020, fatalities is falling, i.e. 75 fewer deaths than in December 2019. Fatalities among car users (112 killed), pedestrians (52 killed) and powered two wheelers (21 killed) are much lower than those observed in December of the last 10 years.

The number of fatalities of cyclists is stable with 12 fatalities.

In December 2020, only under-18 fatalities are higher than in December 2019, with 16 killed (6 more).

Fatalities among 18-24 year olds and 65 years old and over are lower than in December 2019, with 34 and 66 killed respectively (12 and 17 killed by less).

Cumulative 12 months comparaison Jan.2020-.2020 with Jan.2019-.2019, with 2010 and with 2013

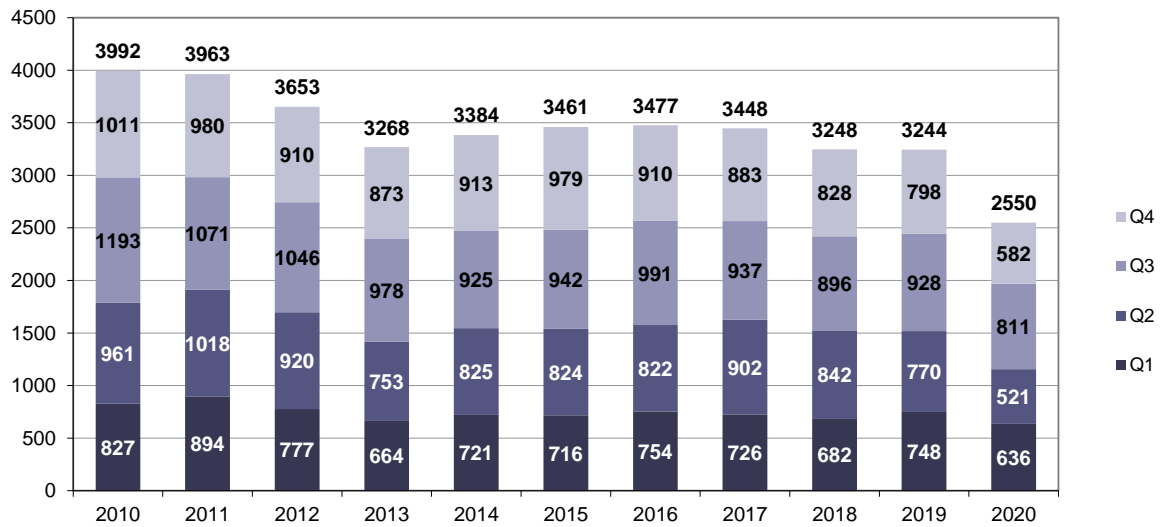
Compared to the situation a year ago, moped riders, car users, motorcyclists, pedestrains and cyclists fatalities decrease (respectively -27%, -27%, -22%, -19% and -8%) and are respectively at -60%, -41%, -32%, -20% and +24% compared to 2010.

Compared to last year, young adult fatalities decrease (-19% i.e. 104 fewer young people killed), down from 2010 (-46%, or 386 fewer young people killed) and from 2013 (-30%, or 191 fewer young people killed).

Fatalities among seniors aged 65 or over decrease (-25% i.e. 208 fewer senior people killed) compared to the situation a year ago, decrease compared to 2010 (-16%, i.e. -123 fatalities) and decrease compared to 2013 (-7%, i.e. -47 fatalities).

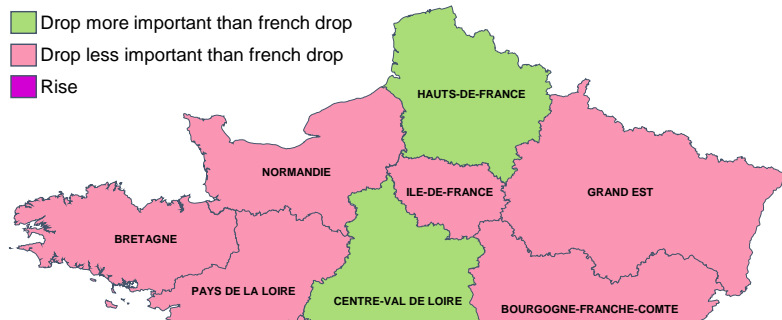
Road traffic fatalities variation by quarterly for each year

Road fatalities in the 4th quarter of 2020 is 27% lower than in the 4th quarter of 2019, with 582 people would have died in 2020 compared to 798 in 2019, i.e. 216 fewer people killed. This decrease concerns car users and motorcyclists (-31% and -31% respectively). Compared to the fourth quarter of 2019, cyclist fatalities decreased slightly (30 killed compared to 36 killed), while 3 EDPm died in the fourth quarter of 2020.

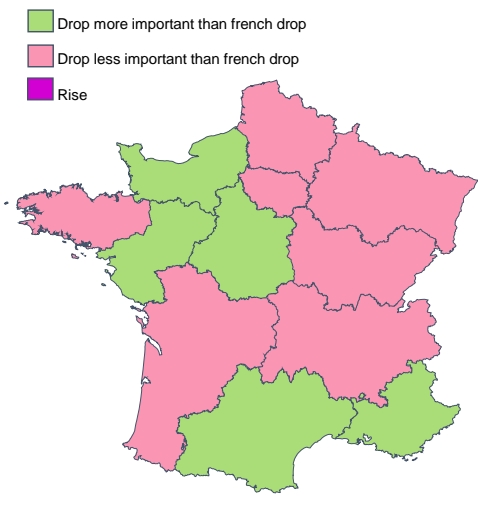


Territorial report

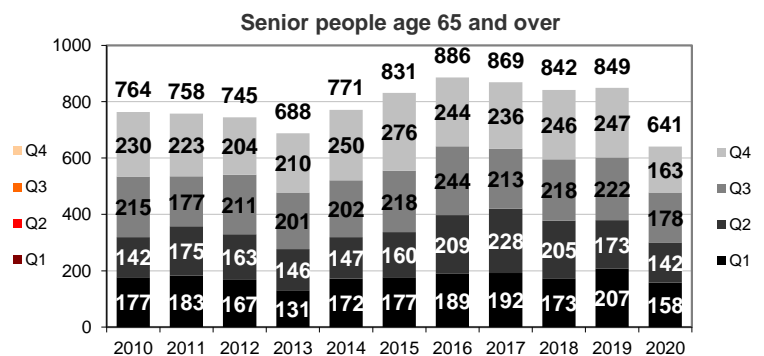
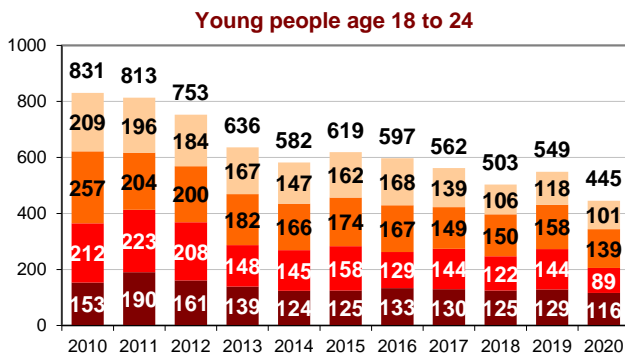
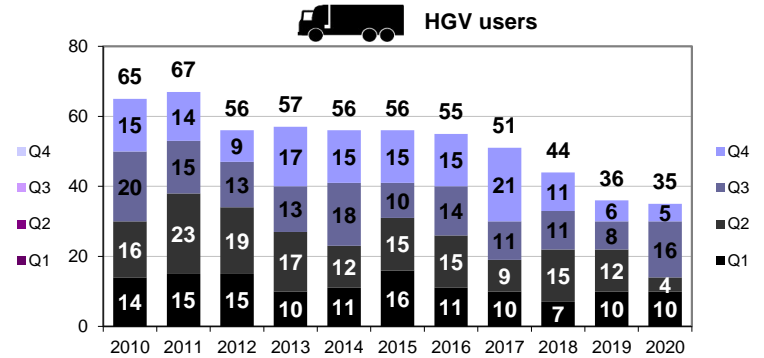
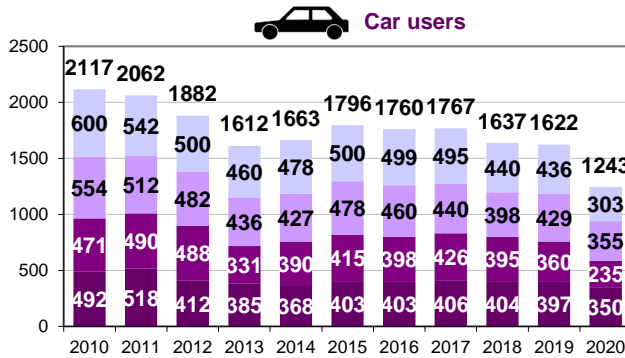
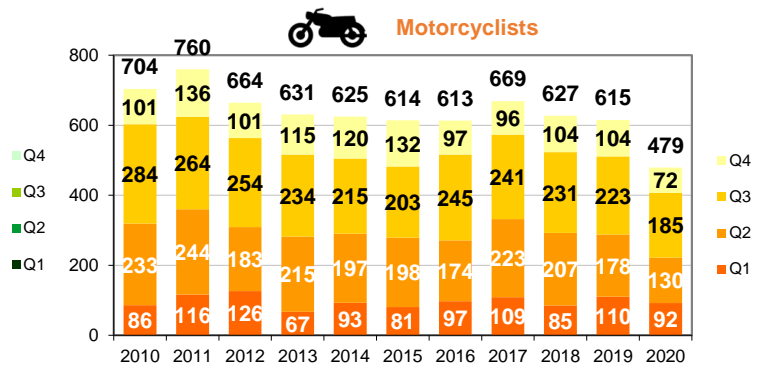
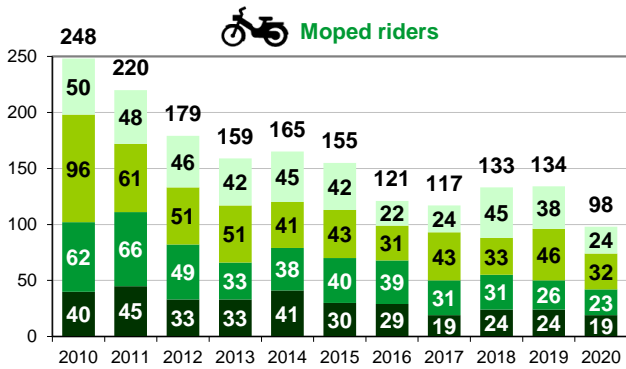
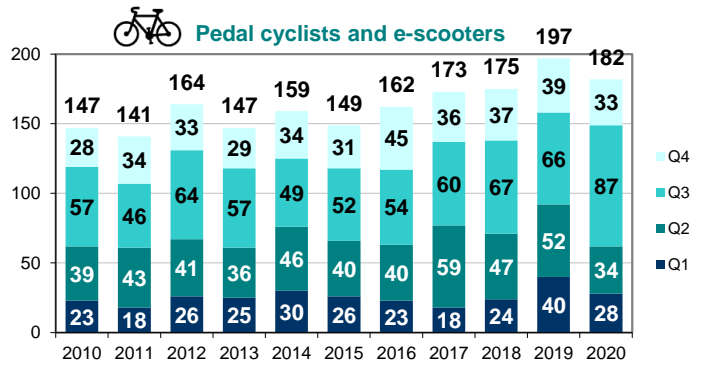
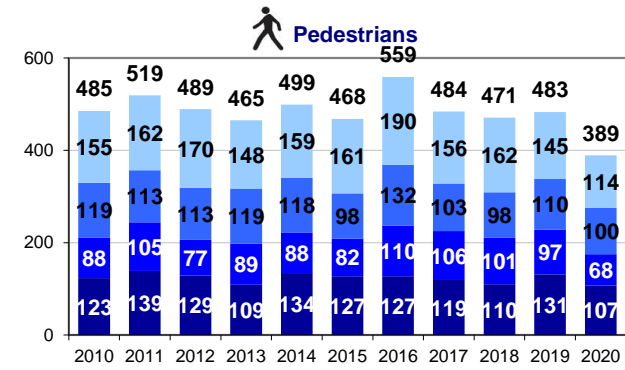
The 12 cumulative months - Variation 2020-2019



The 12 cumulative months - Variation 2020-2010



Road traffic fatalities variation by user categories by quarter for each year



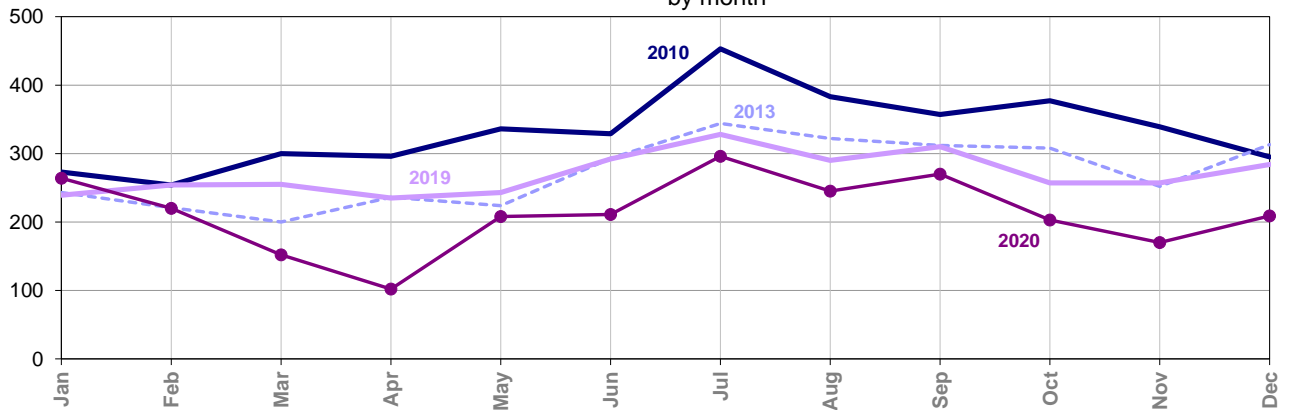
Data source : ONISR - labelled series (definitive until 2019), estimated data 2020
Data on accidents involving injuries recorded by police forces

	December				Since the beginning of the year			
	2020	2019	Difference	Evolution	2020	2019	Difference	Evolution
Accidents	3 857	4 829	- 972	-20,1 %	44 997	56 016	-11 019	-19,7 %
Victims	4 864	6 421	-1 557	-24,2 %	58 304	73 734	-15 430	-20,9 %
Fatalities	209	284	- 75	-26,4 %	2 550	3 244	- 694	-21,4 %
Injured	4 655	6 137	-1 482	-24,1 %	55 754	70 490	-14 736	-20,9 %

ONISR



Fatalities within 30 days by month

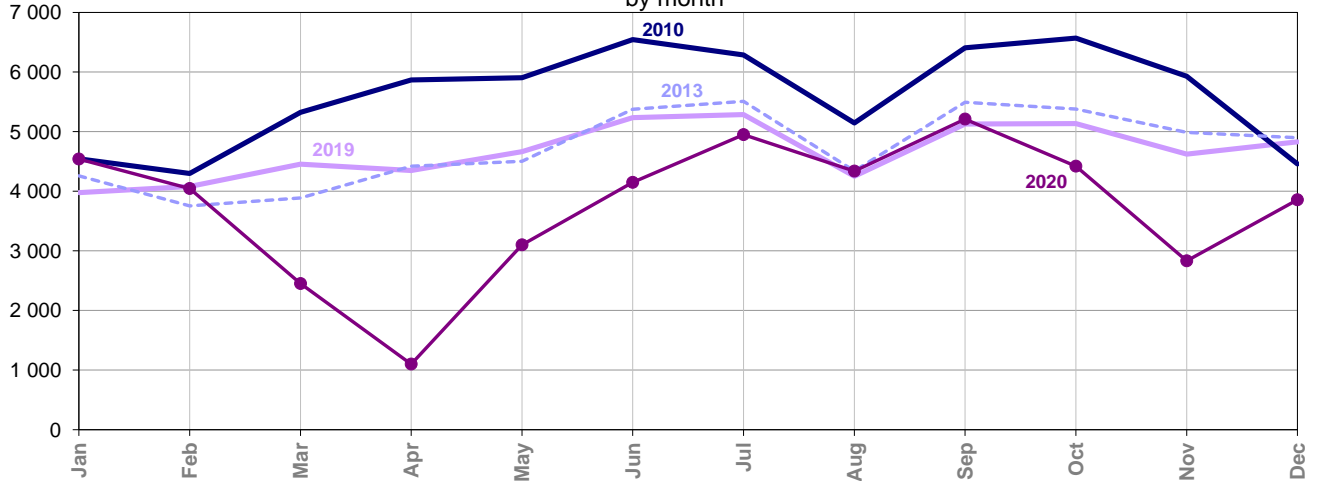


	Jan	Feb	Mar	Apr	May	Jun	Jul	Aug	Sep	Oct	Nov	Dec
2010	273	254	300	296	336	329	453	383	357	377	339	295
2011	324	269	301	360	322	336	354	370	347	351	296	333
2012	297	204	276	277	321	322	366	339	341	299	292	319
2013	243	221	200	236	224	293	344	322	312	308	252	313
2014	235	225	261	254	260	311	302	306	317	347	280	286
2015	262	235	219	258	267	299	353	332	257	378	296	305
2016	236	263	255	243	294	285	356	301	334	315	258	337
2017	255	204	267	281	297	324	343	297	297	319	272	292
2018	229	218	235	284	268	290	328	246	322	274	268	286
2019	239	254	255	235	243	292	328	290	310	257	257	284
2020	264	220	152	102	208	211	296	245	270	203	170	209

ONISR



Injury accidents by month



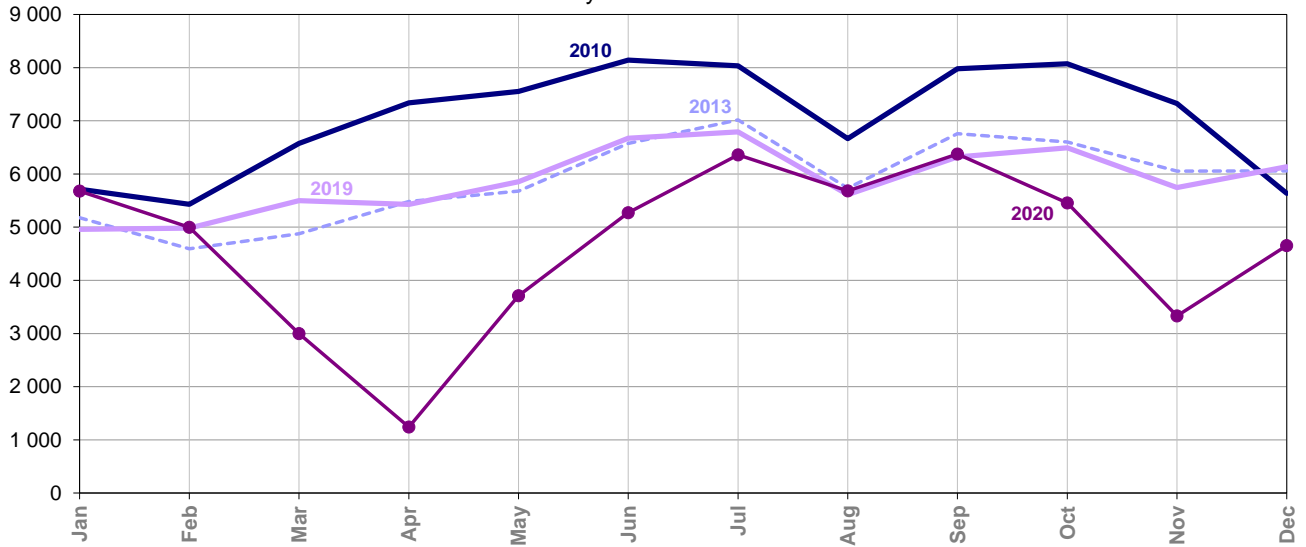
	Jan	Feb	Mar	Apr	May	Jun	Jul	Aug	Sep	Oct	Nov	Dec
2010	4 545	4 299	5 326	5 866	5 904	6 546	6 288	5 147	6 408	6 570	5 929	4 460
2011	4 912	4 357	5 333	5 744	6 098	5 722	5 415	4 748	5 976	5 995	5 253	5 471
2012	4 900	3 810	5 034	4 426	5 193	5 597	5 275	4 398	5 685	5 898	5 175	5 046
2013	4 259	3 755	3 887	4 420	4 503	5 376	5 509	4 341	5 493	5 381	4 989	4 899
2014	4 649	4 091	4 609	4 825	4 958	5 435	4 769	4 100	5 324	5 627	5 055	4 749
2015	4 277	3 709	4 273	4 637	4 741	5 528	5 041	4 279	5 200	5 085	4 998	4 835
2016	4 655	3 958	4 414	4 293	4 967	5 182	5 080	4 166	5 255	5 451	5 201	4 900
2017	4 420	3 876	4 946	4 948	5 112	5 747	5 148	4 291	5 088	5 351	4 987	4 699
2018	4 228	3 339	3 974	4 674	4 874	5 420	5 061	4 156	5 370	5 501	4 698	4 471
2019	3 977	4 082	4 455	4 347	4 664	5 235	5 287	4 253	5 127	5 135	4 625	4 829
2020	4 540	4 046	2 450	1 100	3 100	4 150	4 950	4 339	5 210	4 421	2 834	3 857

NB : In purple in the table, provisional estimates (Extrapolated data from Quick Reporting).

In blue, quasi definitive data.

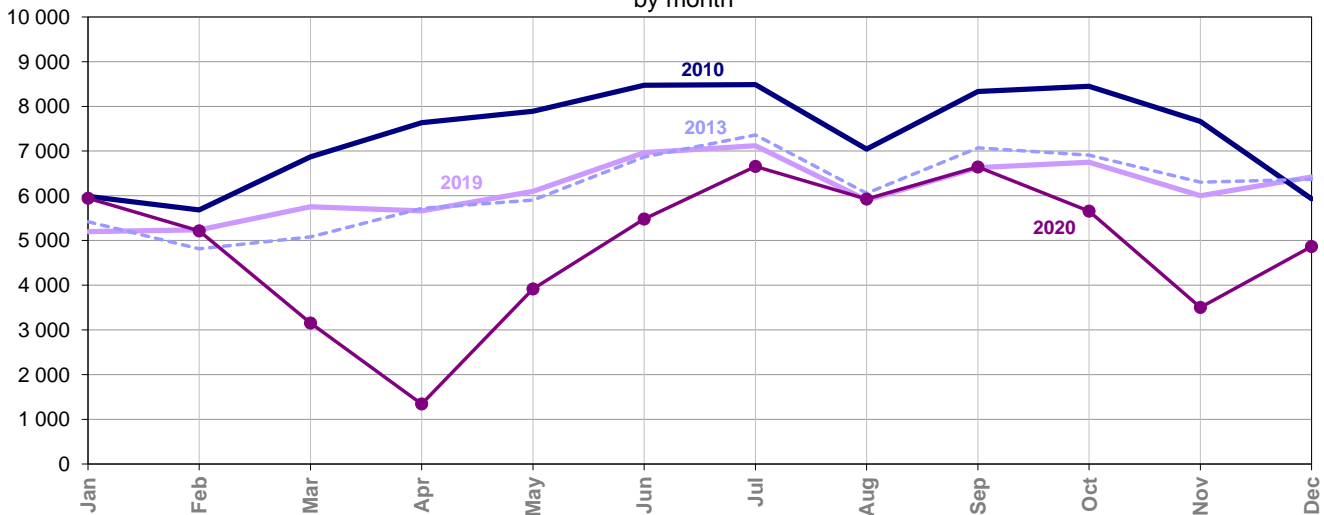
In black, final data from the BAAC database.

Injured by month



	Jan	Feb	Mar	Apr	May	Jun	Jul	Aug	Sep	Oct	Nov	Dec
2010	5 715	5 430	6 573	7 338	7 554	8 142	8 034	6 663	7 978	8 072	7 325	5 637
2011	6 025	5 478	6 553	7 256	7 519	7 165	7 036	6 101	7 346	7 474	6 440	6 858
2012	6 095	4 705	6 244	5 602	6 593	6 981	6 792	5 759	7 134	7 355	6 419	6 172
2013	5 178	4 593	4 878	5 481	5 678	6 576	7 017	5 735	6 759	6 602	6 053	6 057
2014	5 720	5 091	5 697	5 953	6 316	6 850	6 146	5 433	6 608	6 933	6 312	5 989
2015	5 260	4 685	5 296	5 771	5 968	6 857	6 545	5 570	6 534	6 285	6 022	6 009
2016	5 915	4 839	5 459	5 354	6 273	6 627	6 622	5 463	6 530	6 855	6 527	6 181
2017	5 419	4 787	6 156	6 233	6 367	7 193	6 795	5 523	6 295	6 497	6 192	5 927
2018	5 201	4 148	5 012	5 884	6 255	6 715	6 532	5 407	6 614	6 688	5 803	5 628
2019	4 959	4 982	5 500	5 427	5 854	6 671	6 792	5 612	6 320	6 493	5 743	6 137
2020	5 680	4 996	3 000	1 240	3 710	5 270	6 360	5 682	6 375	5 455	3 331	4 655

Total victims (killed + injured) by month



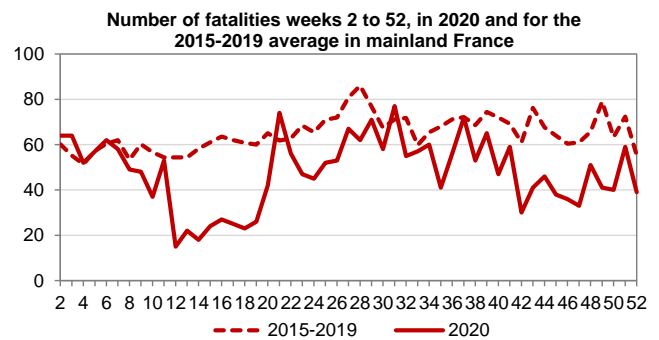
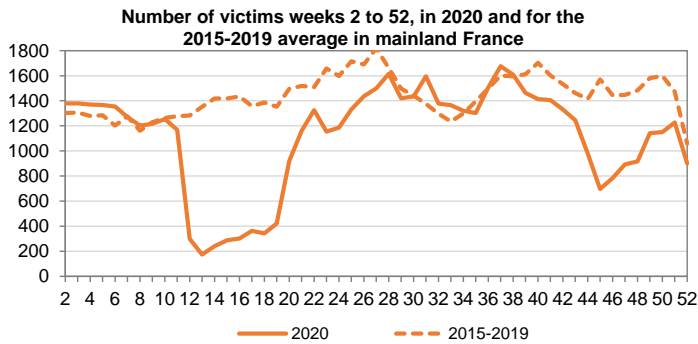
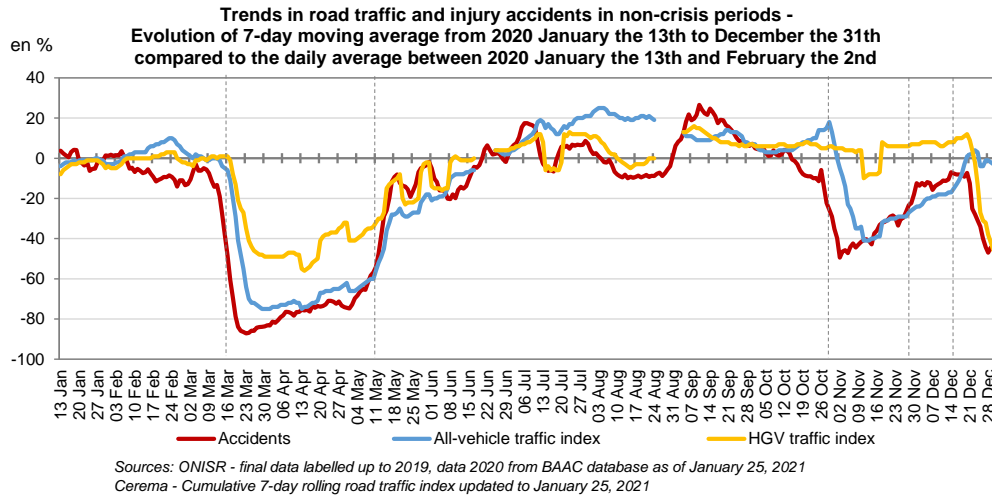
	Jan	Feb	Mar	Apr	May	Jun	Jul	Aug	Sep	Oct	Nov	Dec
2010	5 988	5 684	6 873	7 634	7 890	8 471	8 487	7 046	8 335	8 449	7 664	5 932
2011	6 349	5 747	6 854	7 616	7 841	7 501	7 390	6 471	7 693	7 825	6 736	7 191
2012	6 392	4 909	6 520	5 879	6 914	7 303	7 158	6 098	7 475	7 654	6 711	6 491
2013	5 421	4 814	5 078	5 717	5 902	6 869	7 361	6 057	7 071	6 910	6 305	6 370
2014	5 955	5 316	5 958	6 207	6 576	7 161	6 448	5 739	6 925	7 280	6 592	6 275
2015	5 522	4 920	5 515	6 029	6 235	7 156	6 898	5 902	6 791	6 663	6 318	6 314
2016	6 151	5 102	5 714	5 597	6 567	6 912	6 978	5 764	6 864	7 170	6 785	6 518
2017	5 674	4 991	6 423	6 514	6 664	7 517	7 138	5 820	6 592	6 816	6 464	6 219
2018	5 430	4 366	5 247	6 168	6 523	7 005	6 860	5 653	6 936	6 962	6 071	5 914
2019	5 198	5 236	5 755	5 662	6 097	6 963	7 120	5 902	6 630	6 750	6 000	6 421
2020	5 944	5 216	3 152	1 342	3 918	5 481	6 656	5 927	6 645	5 658	3 501	4 864

NB : In purple in the table, provisional estimates (Extrapolated data from Quick Reporting).
In blue, quasi definitive data.
In black, final data from the BAAC database.

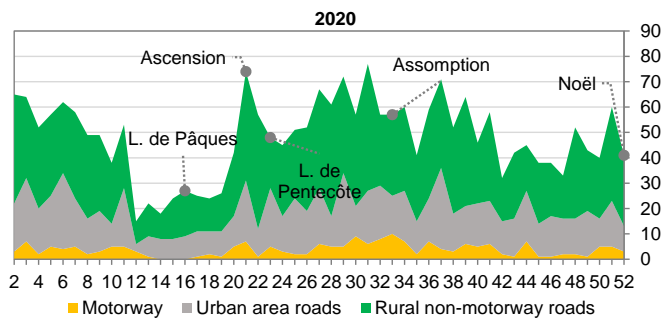
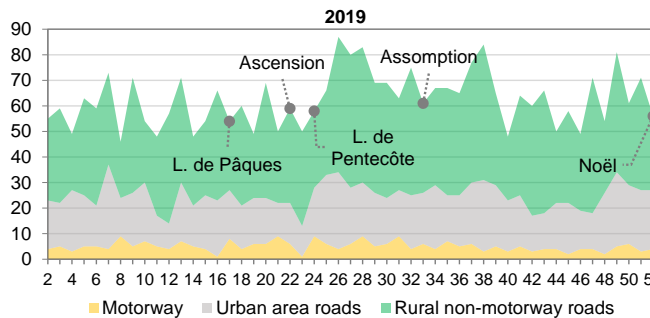
Focus on the year 2020 (from January 6 to December 31)

As part of the management of the Covid 19 crisis, the French population was confined from March 16 to May 10 inclusive and from October 30 to December 14, 2020 inclusive. These periods had repercussions on economic activity, population movements and therefore on road accidents. As of December 15, a curfew was implemented throughout metropolitan France, from 8:00 pm to 6:00 am, with the exception of Christmas.

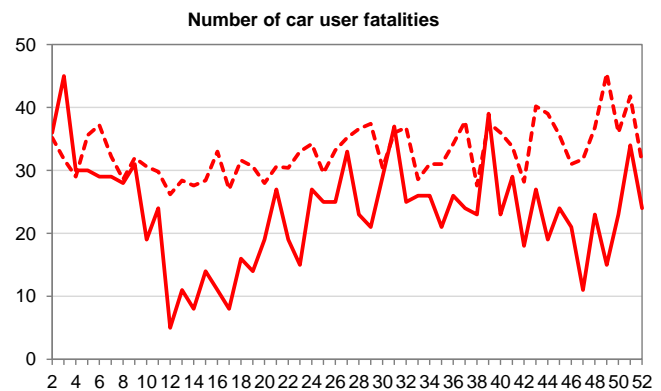
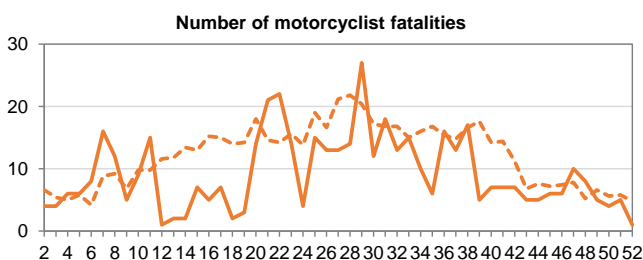
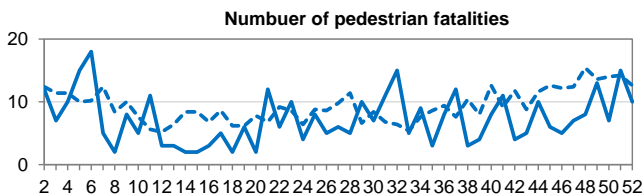
After a peak in September, the accident rate fell, while traffic increased again until the start of the second confinement. From November 27 and the lightening of the containment, accident rates and traffic tend to reach the January level, then drop from the beginning of the school vacations and during the Christmas and New Year.



Fatalities by road environment per week, 2nd to 52th week in mainland France



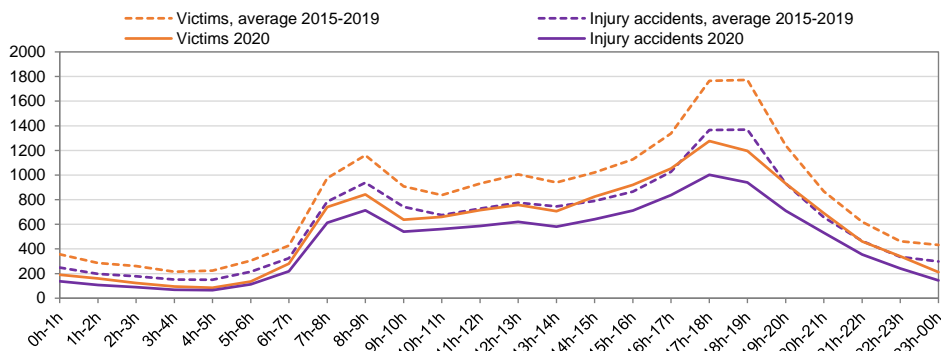
Fatalities by users categories in 2020 compared to the 2015-2019 average (dotted line), per week in mainland France



Over the last 3 months, car users and motorcyclist fatalities have fallen compared to the average for the last 5 years, in contrast to fatalities of pedestrians, which have tended towards the average for the last 5 years.

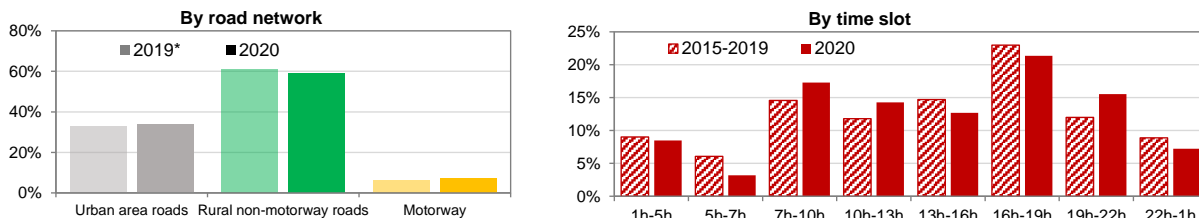
Focus on the period from October to December 2020 compared to the 2015-2019 average

Number of injury accidents and victims (fatalities+injured) for the cumulative from October to December in mainland France



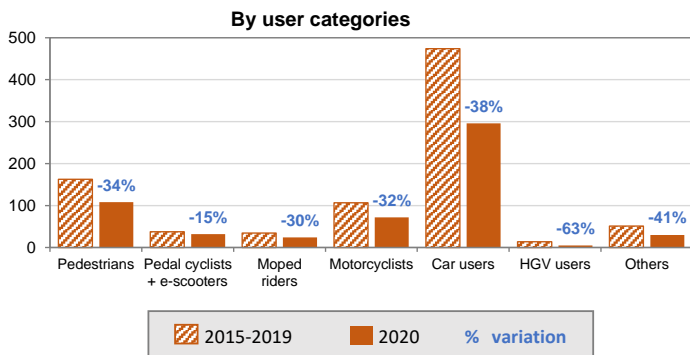
During the 3-month period, the number of fatalities fell more sharply than the number of accidents or victims.

Distribution of cumulative fatalities from October to December for 2015-2019 and 2020 in France mainland



* due to the introduction of 80km/h on the rural non-motorway roads in 2018, the comparison is with the year 2019.

Cumulative number of fatalities from October to December for 2015-2019 and 2020 in France mainland



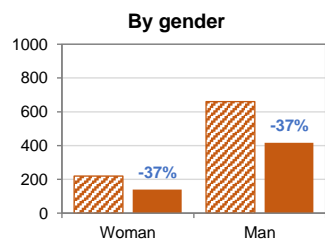
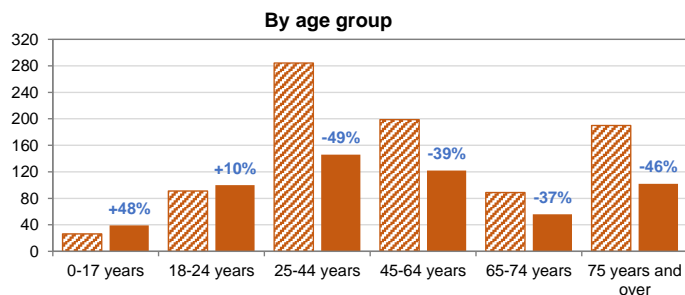
Overall fatalities decreased by -36% during the period from October to December 2020 compared to the average of the last 5 years.

Fatalities among car users and pedestrians contributed the most to the decrease (1/2 and 1/5 respectively). Motorcyclist fatalities decrease slightly less (-32%).

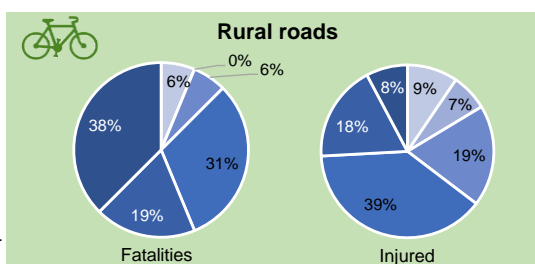
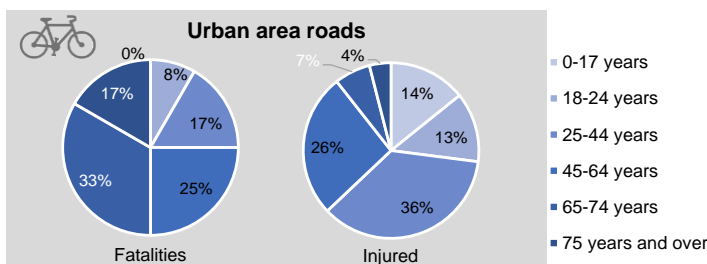
Fatalities among cyclists and users of motorised transport vehicles (e-scooters) decrease much less (-15%).

The decrease in fatalities among people aged 75 years and over (-46%) is greater than the overall decrease, it contributes for 1/4. The decrease in fatalities of 25-44 year olds and 45-64 year olds, although less than the overall decrease, together account for 1/2 of the overall decrease.

The decrease in mortality for men and women is the same, with 3/4 and 1/4 of the mortality proportions being maintained.



Cyclists fatalities and injured, cumulative from October to December 2020 in France mainland



In 2020, 30 cyclists were killed over 3 months (13 on urban area roads and 17 on rural roads), 36 killed in 2019 (23 in the urban area and 13 outside the urban area).

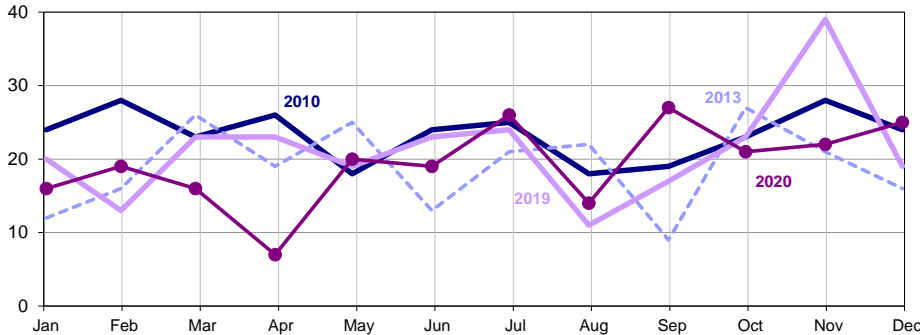
In urban area roads : 61% of cyclist fatalities are between 45 and 74 years old compared with 50% on rural roads, 27% of injured cyclists are under 25 years old compared with 16% on rural roads.

On rural roads : 38% of cyclist fatalities were aged 75 or over compared with 17% on urban area roads, 39% of injured cyclists were aged between 45 and 64 compared with 26% on urban area roads.

As part of the implementation of the new information system, data on hospitalised injuries are not disseminated because they are incomplete

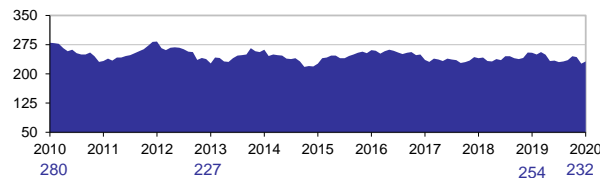
Road fatalities in December 2020 are lower than last year, with 25 people killed.

Fatalities within 30 days by month



Cumulative fatalities rolling 12 months

Fatalities
within 30 days



Month report

292 injury accidents
in December

+13,2% compared with 2019,
+34 accidents

403 victims
on road traffic in December

+14,5% compared with 2019,
+51 victims

378 injured
in December

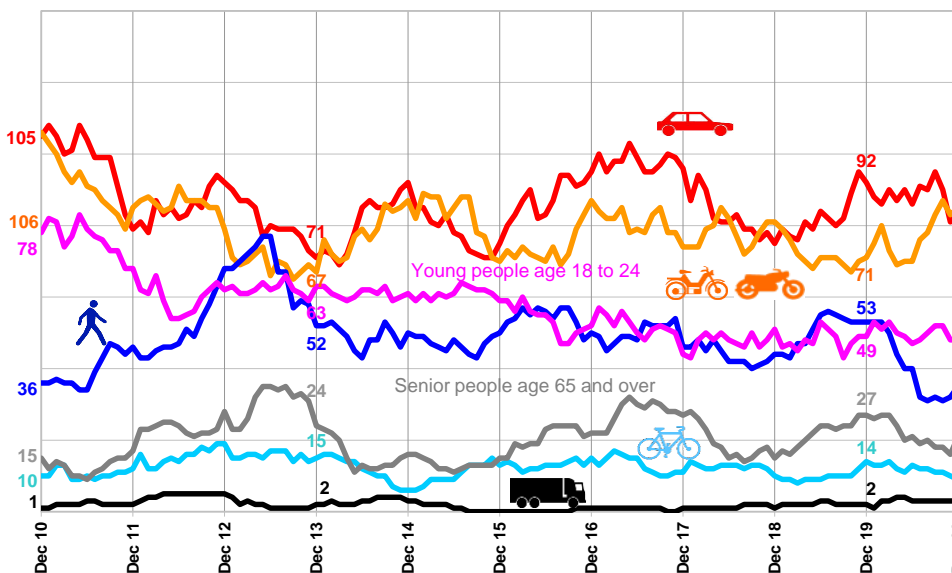
+13,5% compared with 2019,
+45 injured

25 fatalities
in December

+31,6% compared with 2019,
+6 fatalities

	December				Since the beginning of the year			
	2020	2019	Difference	Evolution	2020	2019	Difference	Evolution
Accidents	292	258	+ 34	+13,2 %	2 526	2 824	- 298	-10,6 %
Victims	403	352	+ 51	+14,5 %	3 538	3 929	- 391	-10,0 %
Fatalities	25	19	+ 6	+31,6 %	232	254	- 22	-8,7 %
Injured	378	333	+ 45	+13,5 %	3 306	3 675	- 369	-10,0 %

Development of the number of users fatalities cumulated on a rolling 12 months



Number users fatalities cumulated on a rolling 12 months, in

December 2020
% compared with 2010

Car users
84 ; -20%

PTW
85 ; -20%

Pedestrians
35 ; -3%

Young people
48 ; -38%

Senior people
21 ; ns

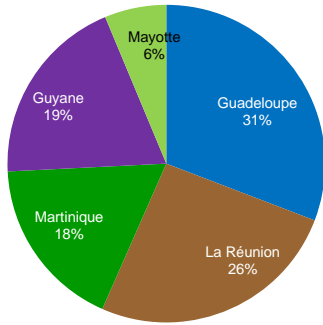
Pedal cyclists
9 ; ns

HGV Users
3 ; ns

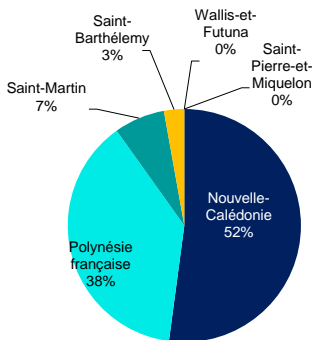
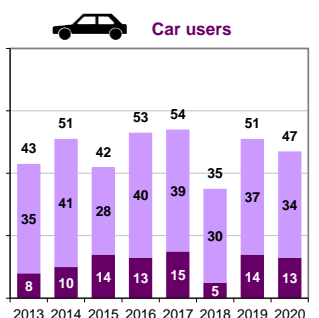
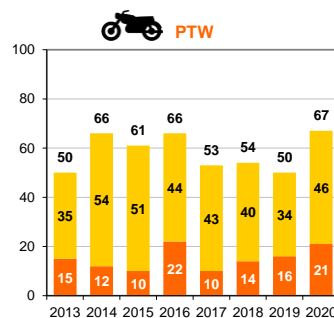
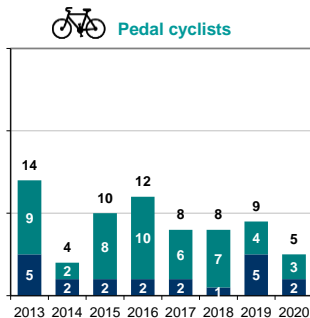
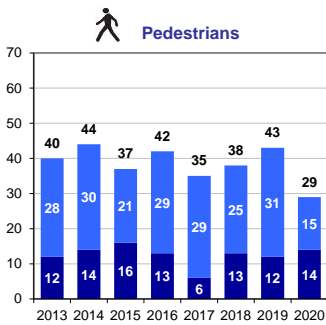
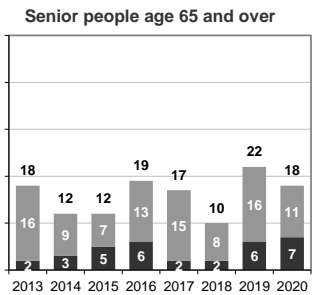
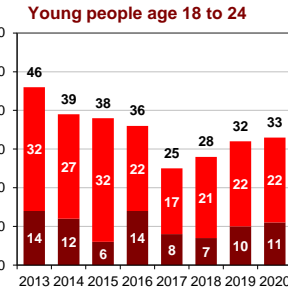
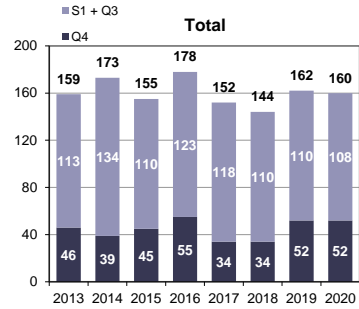
Data source : ONISR - final data from the BAAC database up to 2019, provisional data 2020 ; ns : non-significant evolution
Data on accidents involving injuries recorded by police forces

Road traffic fatalities variation by users categories by quarterly for each year

French overseas counties



160 fatalities in 2020



72 fatalities in 2020

