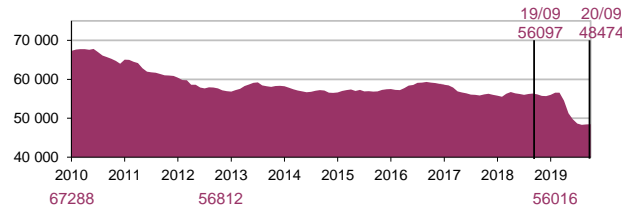


As part of the implementation of the new information system, data on hospitalised injuries are not disseminated because they are incomplete

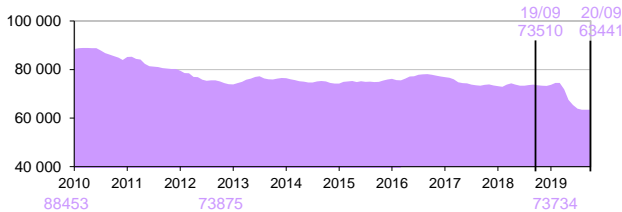
275 people died on the roads in September 2020, 35 fewer than in September 2019. The estimated number of fatalities is lower than last year for motorcyclists (61 fatalities or 21 fewer) and car users (121 fatalities or 16 fewer). Despite this decrease, the number of deaths for cyclists is rising (37 killed, or 15 more).

Cumulative rolling 12 months

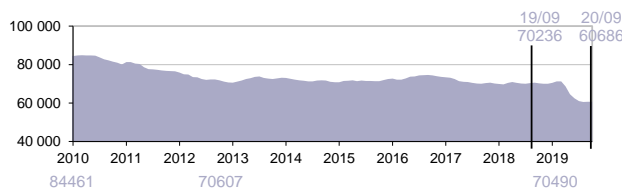
Injury accidents
 open to public traffic



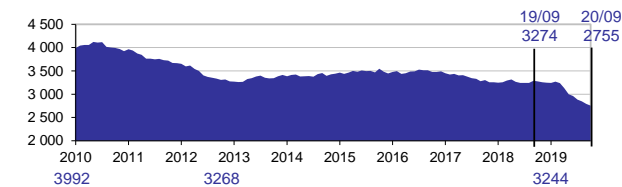
Road traffic victims
 sum of fatalities and injured people



Injured



Fatalities
 within 30 days



Month report

5 210 injury accidents
 in September

+1,6% compared with 2019,
 83 accidents

6 650 victims
 on road traffic in September

+0,3% compared with 2019,
 20 victims

6 375 injured
 in September

+0,9% compared with 2019,
 55 injured

275 fatalities
 in September

-11,3% compared with 2019,
 -35 fatalities

2 755 fatalities
 these last twelve months
 519 fewer fatalities (-15,9%)

60 686 injured
 these last twelve months
 9550 fewer injured (-13,6%)

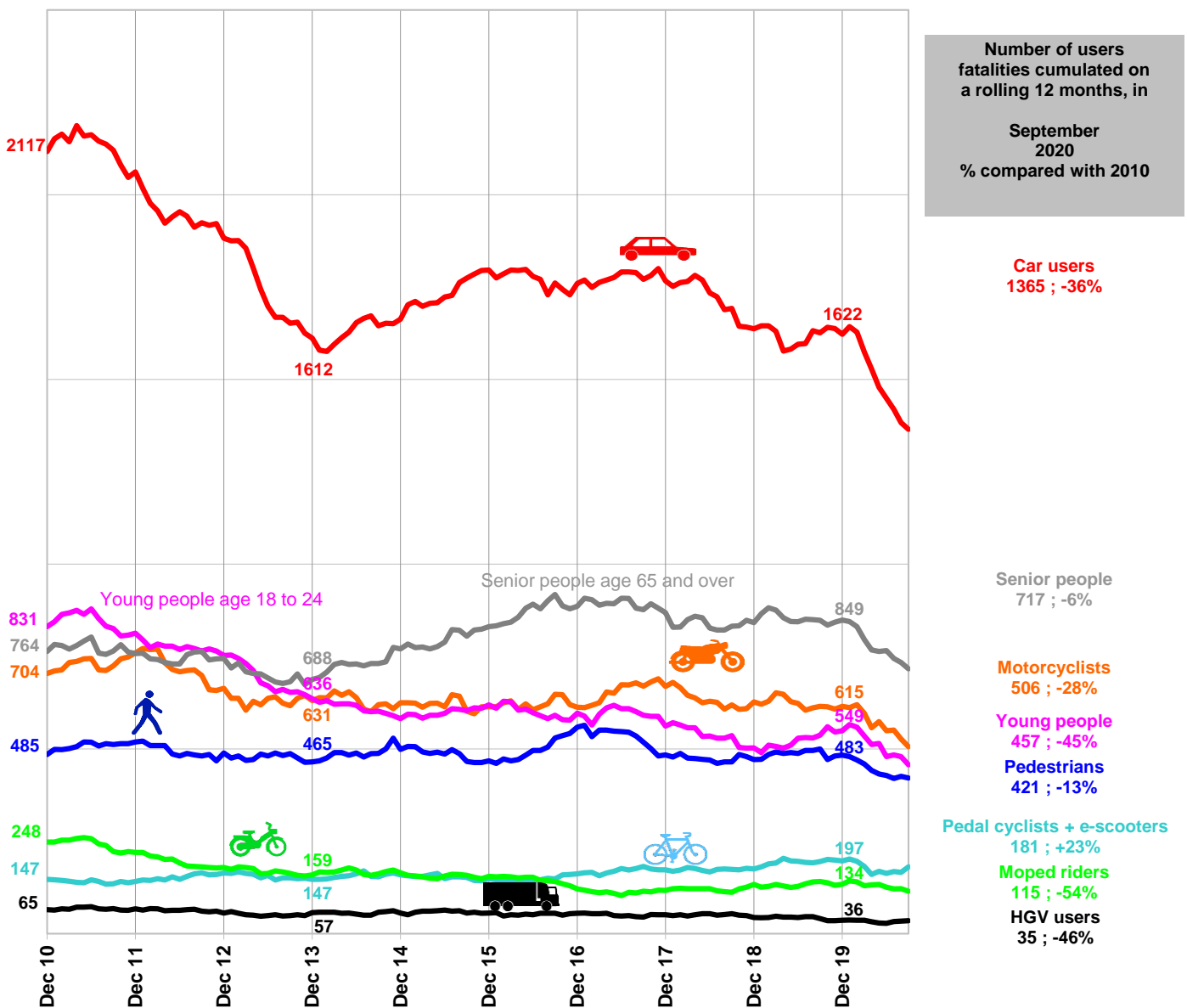
**CUMULATIVE
 12 MONTHS**

FROM OCTOBER 2019 TO SEPTEMBER 2020
 compared with cumulative 12 months
 FROM OCTOBER 2018 TO SEPTEMBER 2019

48 474
 Injury accidents
 these last twelve months
 7623 fewer accidents (-13,6%)

63 441 victims
 these last twelve months
 10069 fewer victims (-13,7%)

Development of the number of users fatalities cumulated on a rolling 12 months



Cumulative 12 months comparaison Oct.2019-Sep.2020 with Sep.2019-Aug.2020

The decrease in fatalities due to the implementation of population containment is diminishing, with 35 fewer deaths in September 2020 than in September 2019. The fatalities of car users (121 killed) and motorcyclists (61 killed) have never been so low in the last 10 years, for the month of September. Pedestrian fatalities are stable compared to September 2019. Fatalities for cyclists (37 killed) are rising on rural and urban area roads, have never been so high in the last 10 years.

In September 2020, the fatalities of young people aged 18-24 and seniors aged 65 or over, have never been so high in the last 10 years, for the month of September, with respectively 39 and 66 killed.

Cumulative 12 months comparaison Oct.2019-Sep.2020 with Oct.2018-Sep.2019, with 2010 and with 2013

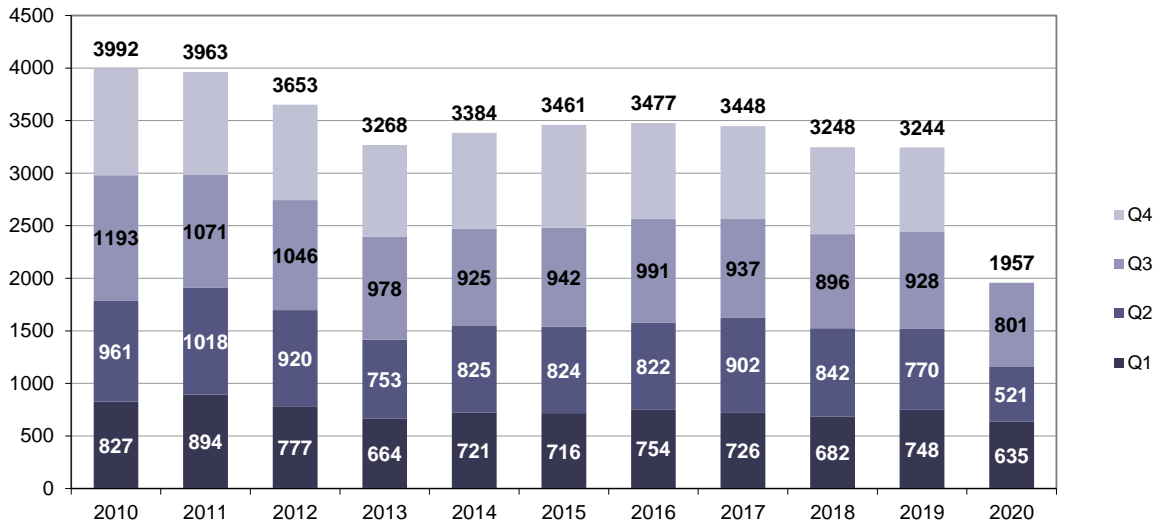
Compared to the situation a year ago, moped riders, motorcyclists, car users and pedestrians fatalities decrease (respectively -18%, -17%, -16% and -16%) and are respectively at -54%, -28%, -36% and -13% compared to 2010. Cyclist fatalities decreased less (-7%) compared to last year and increased by +23% compared to 2010.

Compared to last year, young adult fatalities decrease (-15% i.e. 80 fewer young people killed), down from 2010 (-45%, or 374 fewer young people killed) and from 2013 (-28%, or 179 fewer young people killed).

Fatalities among seniors aged 65 or over decrease (-15% i.e. 131 fewer senior people killed) compared to the situation a year ago, decrease compared to 2010 (-6%, i.e. -47 fatalities) and are stable compared to 2013.

Road traffic fatalities variation by quarterly for each year

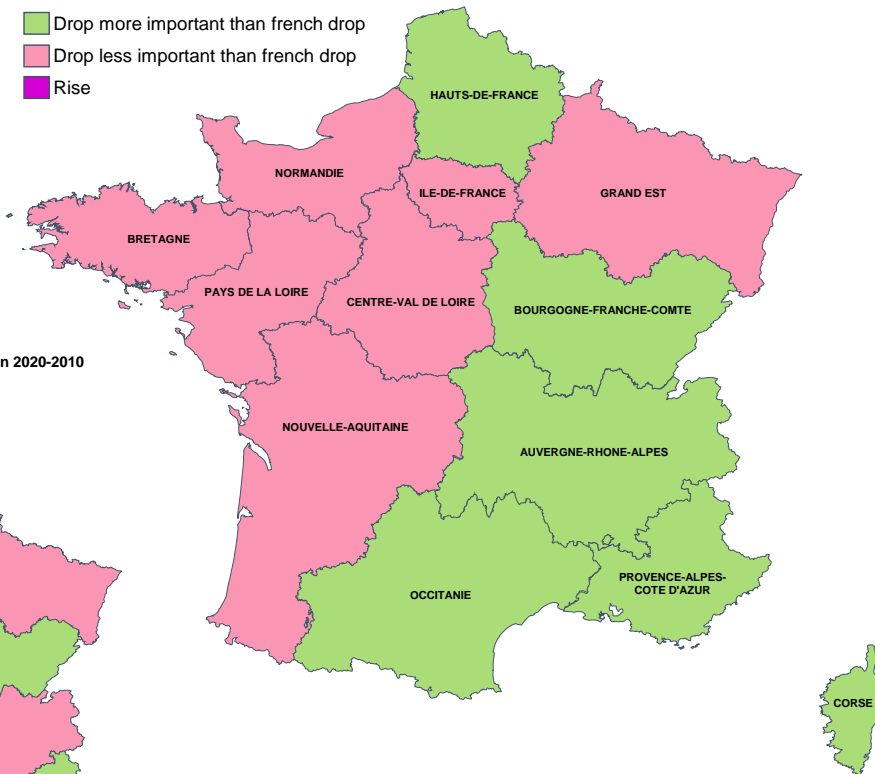
Road fatalities in the third quarter of 2020 decrease highly, 801 people would have died in 2020 compared to 928 in 2019, a decrease of -14%, i.e. 127 fewer people killed. This decrease mainly concerns car users and motorcyclists (-20% and -19% respectively). Compared to the third quarter of 2019, cyclist fatalities are the highest in the last 10 years for a third quarter with 83 people killed (137 cyclists and 5 EDPm have been killed since the beginning of the year compared to 151 cyclists and 7 EDPm for the same period in 2019). Heavy goods vehicle users fatalities have almost doubled with 15 killed, but remain equivalent to the third quarter of previous years.



Territorial report

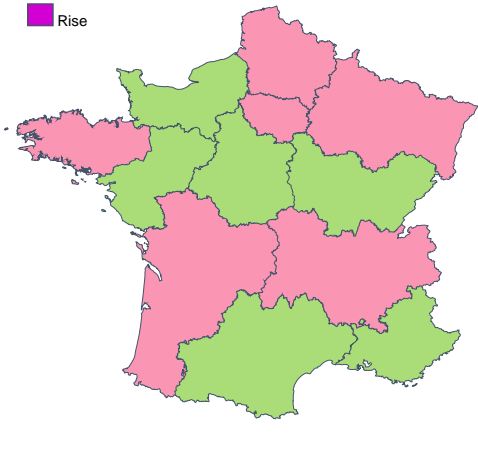
The 9 first cumulative months - Variation 2020-2019

- Drop more important than french drop
- Drop less important than french drop
- Rise

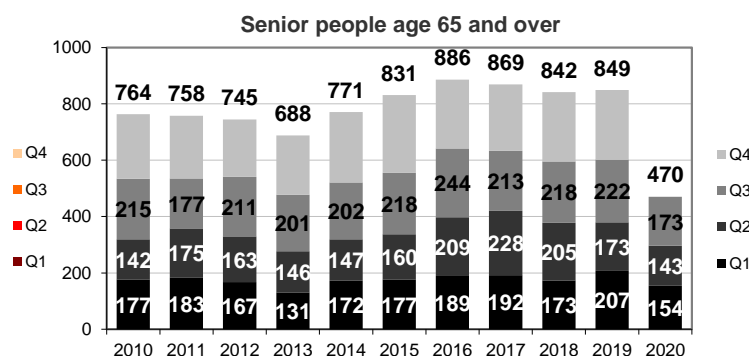
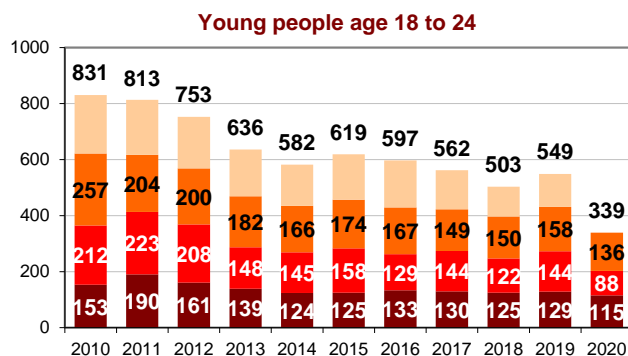
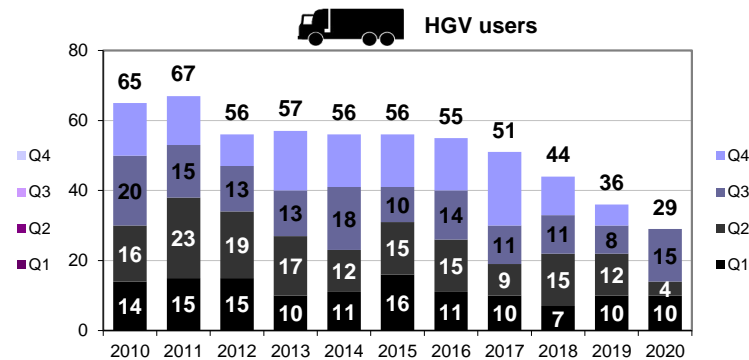
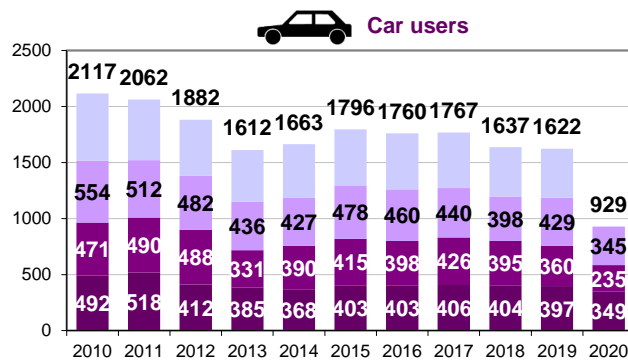
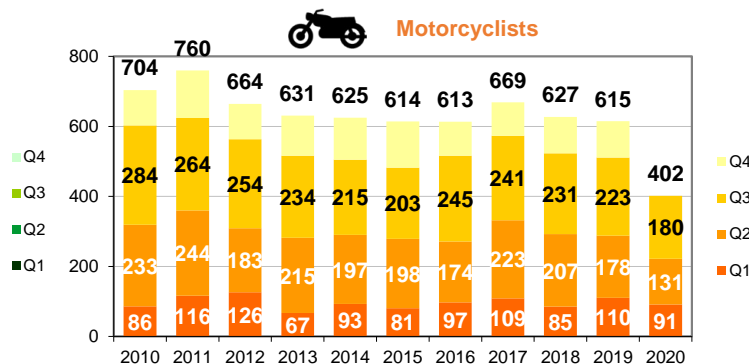
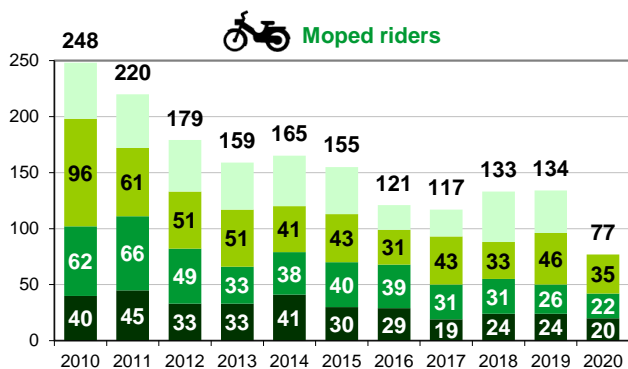
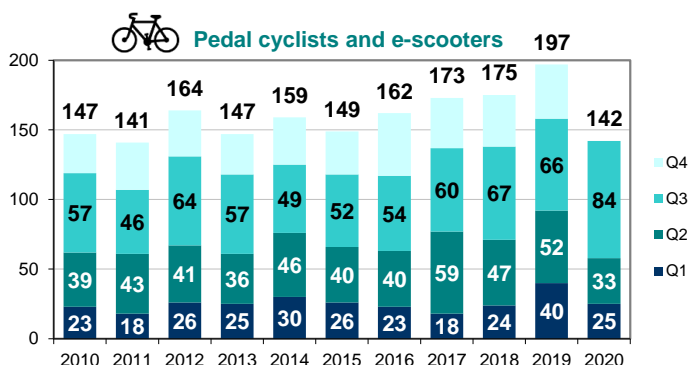
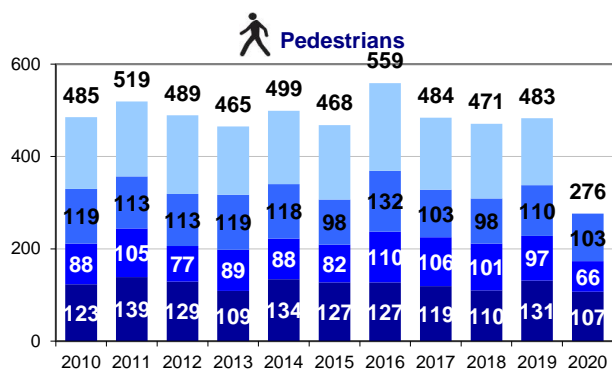


The 9 first cumulative months - Variation 2020-2010

- Drop more important than french drop
- Drop less important than french drop
- Rise



Road traffic fatalities variation by user categories by quarter for each year

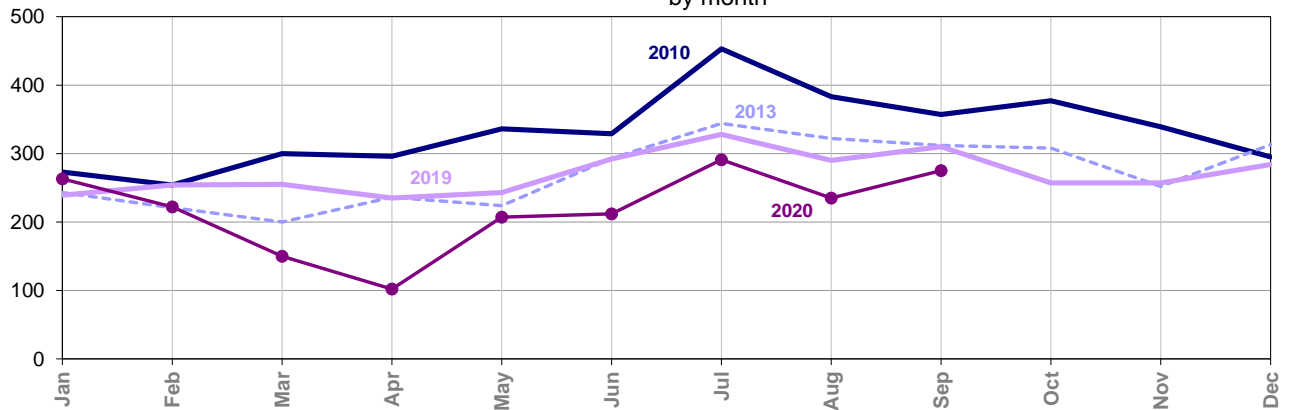


	September				Since the beginning of the year				On a rolling 12 months			
	2020	2019	Difference	Evolution	2020	2019	Difference	Evolution	2020	2019	Difference	Evolution
Accidents	5 210	5 127	+ 83	+1,6 %	33 885	41 427	-7 542	-18,2 %	48 474	56 097	-7 623	-13,6 %
Victims	6 650	6 630	+ 20	+0,3 %	44 270	54 563	-10 293	-18,9 %	63 441	73 510	-10 069	-13,7 %
Fatalities	275	310	- 35	-11,3 %	1 957	2 446	- 489	-20,0 %	2 755	3 274	- 519	-15,9 %
Injured	6 375	6 320	+ 55	+0,9 %	42 313	52 117	-9 804	-18,8 %	60 686	70 236	-9 550	-13,6 %

ONISR



Fatalities within 30 days by month

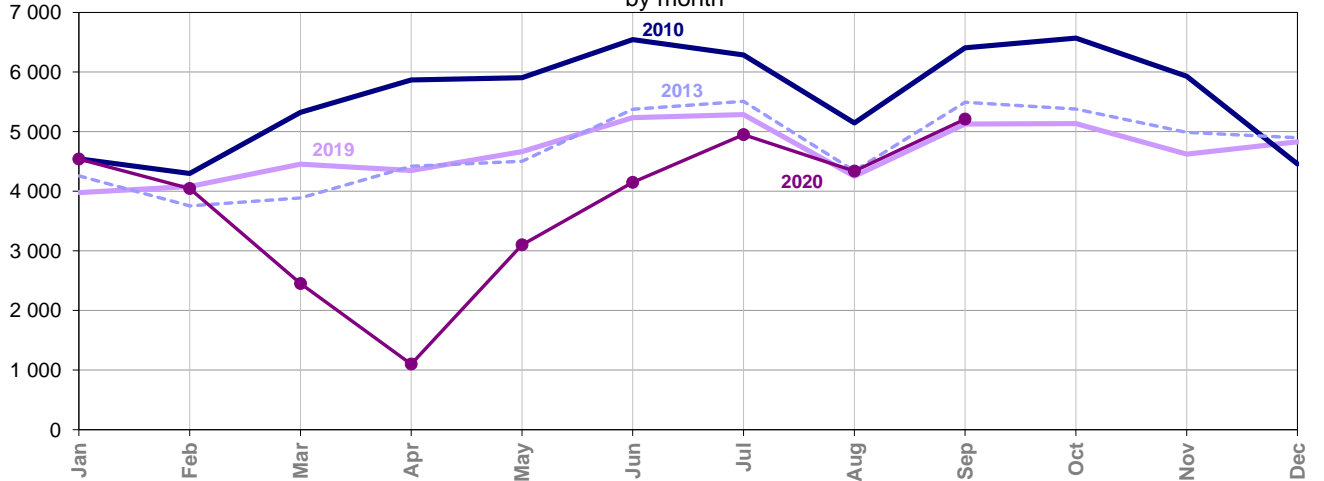


	Jan	Feb	Mar	Apr	May	Jun	Jul	Aug	Sep	Oct	Nov	Dec
2010	273	254	300	296	336	329	453	383	357	377	339	295
2011	324	269	301	360	322	336	354	370	347	351	296	333
2012	297	204	276	277	321	322	366	339	341	299	292	319
2013	243	221	200	236	224	293	344	322	312	308	252	313
2014	235	225	261	254	260	311	302	306	317	347	280	286
2015	262	235	219	258	267	299	353	332	257	378	296	305
2016	236	263	255	243	294	285	356	301	334	315	258	337
2017	255	204	267	281	297	324	343	297	297	319	272	292
2018	229	218	235	284	268	290	328	246	322	274	268	286
2019	239	254	255	235	243	292	328	290	310	257	257	284
2020	263	222	150	102	207	212	291	235	275			

ONISR



Injury accidents by month



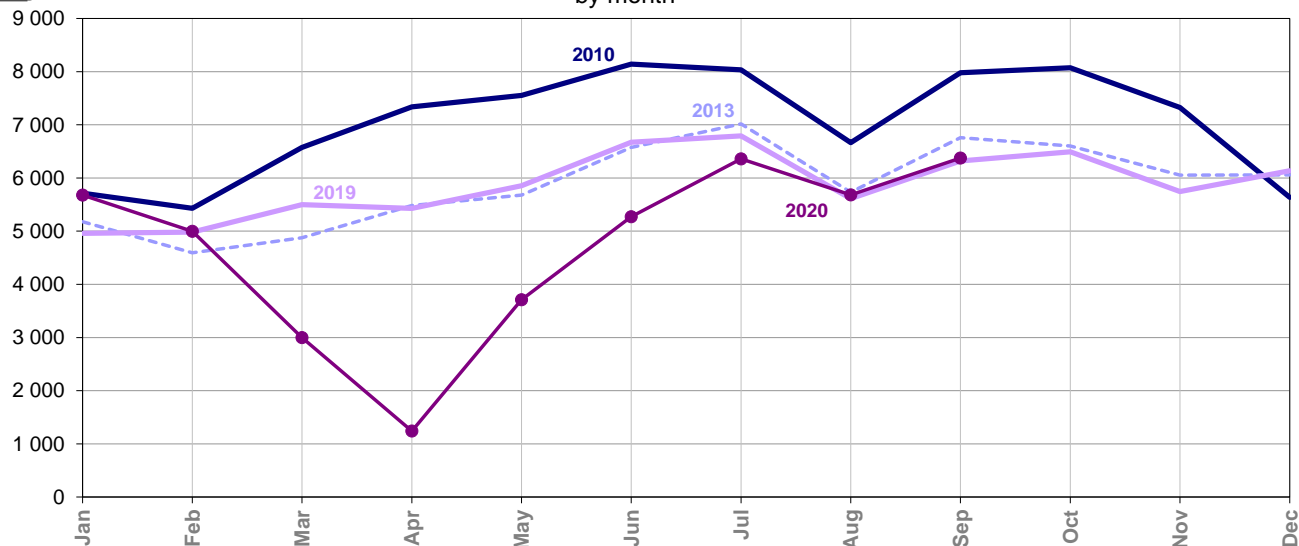
	Jan	Feb	Mar	Apr	May	Jun	Jul	Aug	Sep	Oct	Nov	Dec
2010	4 545	4 299	5 326	5 866	5 904	6 546	6 288	5 147	6 408	6 570	5 929	4 460
2011	4 912	4 357	5 333	5 744	6 098	5 722	5 415	4 748	5 976	5 995	5 253	5 471
2012	4 900	3 810	5 034	4 426	5 193	5 597	5 275	4 398	5 685	5 898	5 175	5 046
2013	4 259	3 755	3 887	4 420	4 503	5 376	5 509	4 341	5 493	5 381	4 989	4 899
2014	4 649	4 091	4 609	4 825	4 958	5 435	4 769	4 100	5 324	5 627	5 055	4 749
2015	4 277	3 709	4 273	4 637	4 741	5 528	5 041	4 279	5 200	5 085	4 998	4 835
2016	4 655	3 958	4 414	4 293	4 967	5 182	5 080	4 166	5 255	5 451	5 201	4 900
2017	4 420	3 876	4 946	4 948	5 112	5 747	5 148	4 291	5 088	5 351	4 987	4 699
2018	4 228	3 339	3 974	4 674	4 874	5 420	5 061	4 156	5 370	5 501	4 698	4 471
2019	3 977	4 082	4 455	4 347	4 664	5 235	5 287	4 253	5 127	5 135	4 625	4 829
2020	4 540	4 046	2 450	1 100	3 100	4 150	4 950	4 339	5 210			

NB : In purple in the table, provisional estimates (Extrapolated data from Quick Reporting).

In blue, quasi definitive data.

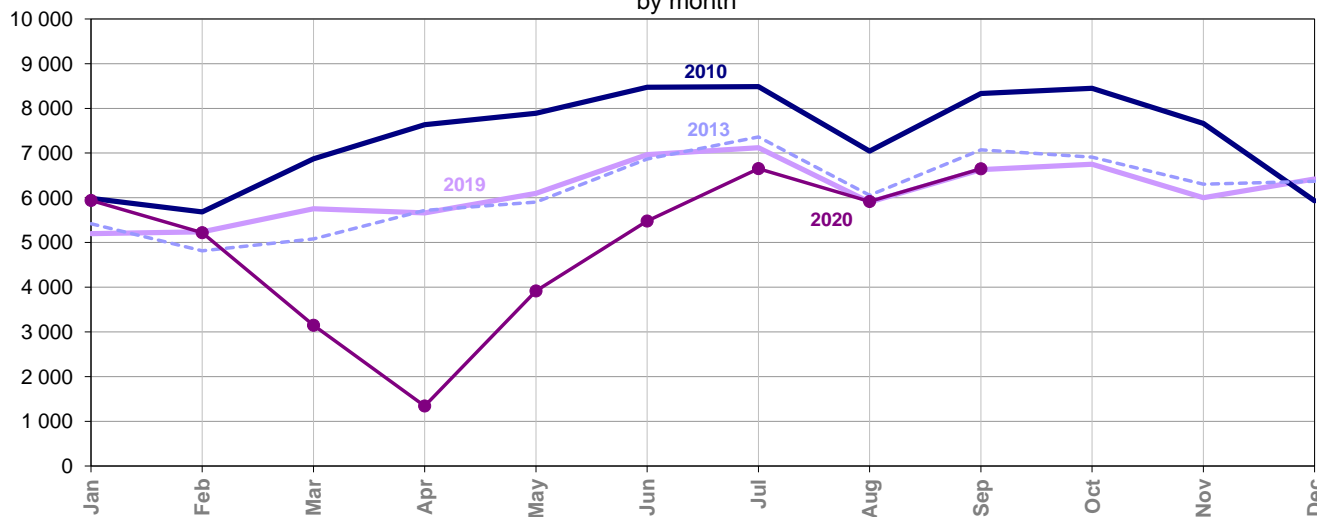
In black, final data from the BAAC database.

Injured by month



	Jan	Feb	Mar	Apr	May	Jun	Jul	Aug	Sep	Oct	Nov	Dec
2010	5 715	5 430	6 573	7 338	7 554	8 142	8 034	6 663	7 978	8 072	7 325	5 637
2011	6 025	5 478	6 553	7 256	7 519	7 165	7 036	6 101	7 346	7 474	6 440	6 858
2012	6 095	4 705	6 244	5 602	6 593	6 981	6 792	5 759	7 134	7 355	6 419	6 172
2013	5 178	4 593	4 878	5 481	5 678	6 576	7 017	5 735	6 759	6 602	6 053	6 057
2014	5 720	5 091	5 697	5 953	6 316	6 850	6 146	5 433	6 608	6 933	6 312	5 989
2015	5 260	4 685	5 296	5 771	5 968	6 857	6 545	5 570	6 534	6 285	6 022	6 009
2016	5 915	4 839	5 459	5 354	6 273	6 627	6 622	5 463	6 530	6 855	6 527	6 181
2017	5 419	4 787	6 156	6 233	6 367	7 193	6 795	5 523	6 295	6 497	6 192	5 927
2018	5 201	4 148	5 012	5 884	6 255	6 715	6 532	5 407	6 614	6 688	5 803	5 628
2019	4 959	4 982	5 500	5 427	5 854	6 671	6 792	5 612	6 320	6 493	5 743	6 137
2020	5 680	4 996	3 000	1 240	3 710	5 270	6 360	5 682	6 375			

Total victims (killed + injured) by month



	Jan	Feb	Mar	Apr	May	Jun	Jul	Aug	Sep	Oct	Nov	Dec
2010	5 988	5 684	6 873	7 634	7 890	8 471	8 487	7 046	8 335	8 449	7 664	5 932
2011	6 349	5 747	6 854	7 616	7 841	7 501	7 390	6 471	7 693	7 825	6 736	7 191
2012	6 392	4 909	6 520	5 879	6 914	7 303	7 158	6 098	7 475	7 654	6 711	6 491
2013	5 421	4 814	5 078	5 717	5 902	6 869	7 361	6 057	7 071	6 910	6 305	6 370
2014	5 955	5 316	5 958	6 207	6 576	7 161	6 448	5 739	6 925	7 280	6 592	6 275
2015	5 522	4 920	5 515	6 029	6 235	7 156	6 898	5 902	6 791	6 663	6 318	6 314
2016	6 151	5 102	5 714	5 597	6 567	6 912	6 978	5 764	6 864	7 170	6 785	6 518
2017	5 674	4 991	6 423	6 514	6 664	7 517	7 138	5 820	6 592	6 816	6 464	6 219
2018	5 430	4 366	5 247	6 168	6 523	7 005	6 860	5 653	6 936	6 962	6 071	5 914
2019	5 198	5 236	5 755	5 662	6 097	6 963	7 120	5 902	6 630	6 750	6 000	6 421
2020	5 943	5 218	3 150	1 342	3 917	5 482	6 651	5 917	6 650			

NB : In purple in the table, provisional estimates (Extrapolated data from Quick Reporting).

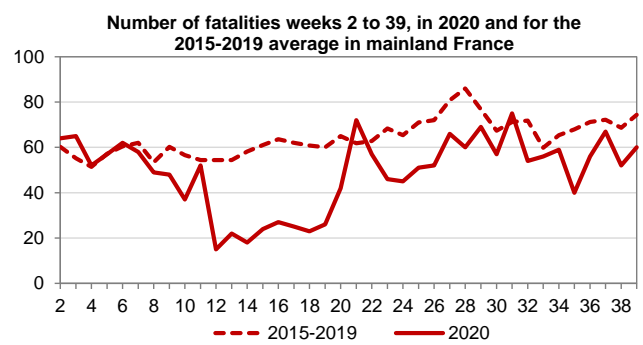
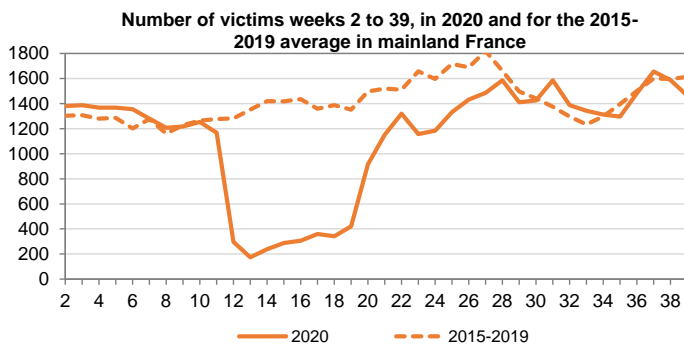
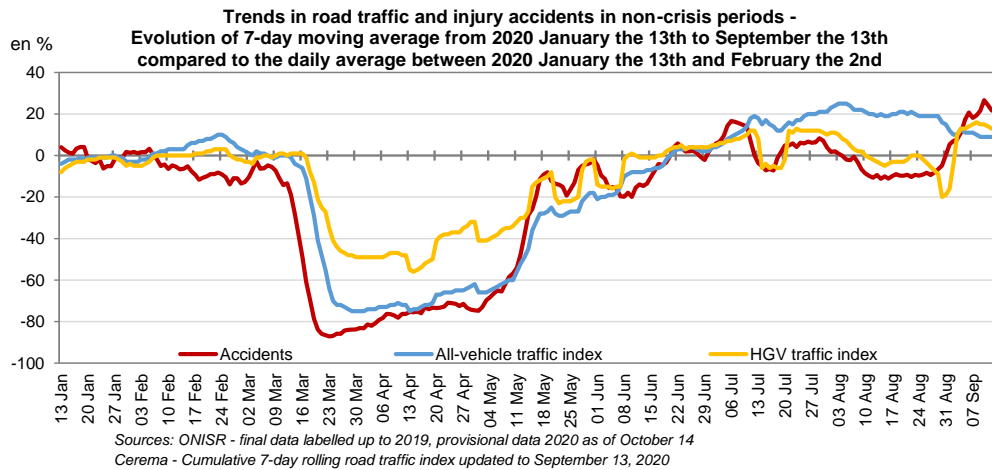
In blue, quasi definitive data.

In black, final data from the BAAC database.

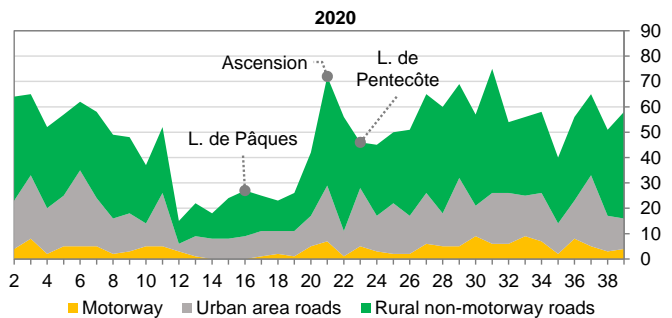
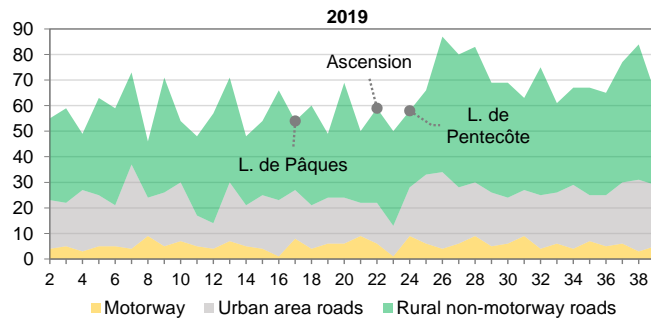
Zoom from the 2nd to the 39th week 2020 (January 6 to September 27)

As part of the management of the Covid 19 crisis, the French population was confined from 16 March to 10 May 2020 inclusive. This period had repercussions on economic activity, population movements and consequently on road accidents.

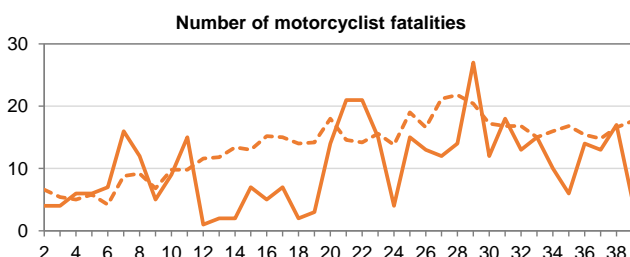
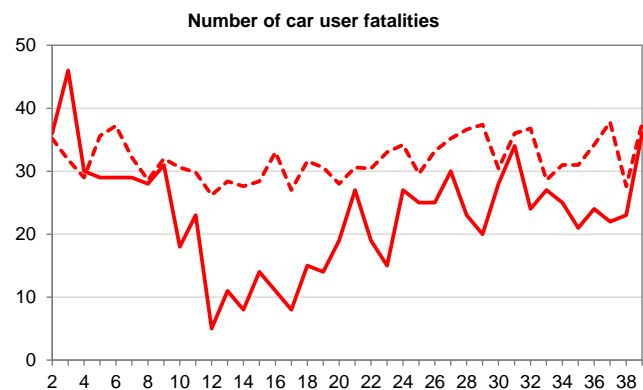
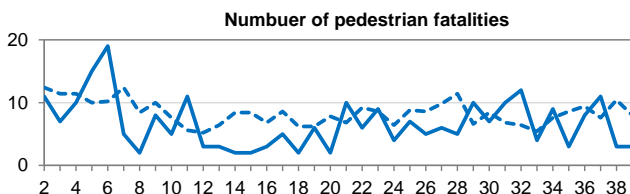
Since the end of the confinement, traffic increased until the end of July, stabilised in August and then tended to decrease in September, while the accident rate increased.



Fatalities by road environment per week, 2nd to 39th week in mainland France



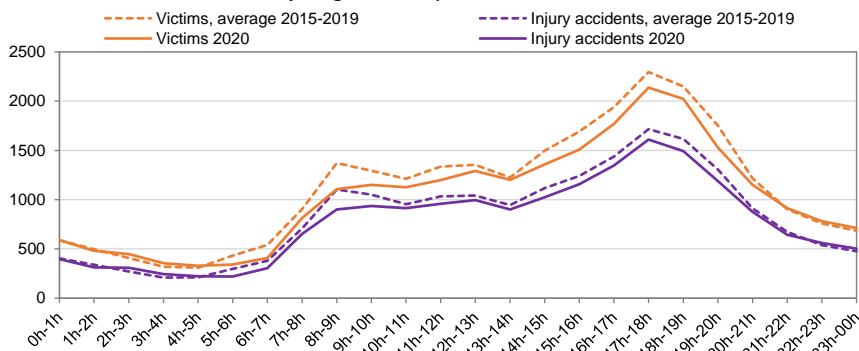
Fatalities by users categories in 2020 compared to the 2015-2019 average (dotted line), per week in mainland France



Over the last 4 months, motorcyclist and pedestrian fatalities have fallen compared to the average for the last 5 years, in contrast to fatalities of car users, which have tended towards the average for the last 5 years.

Focus on the period of June, July, August and September 2020 compared to the 2015-2019 average

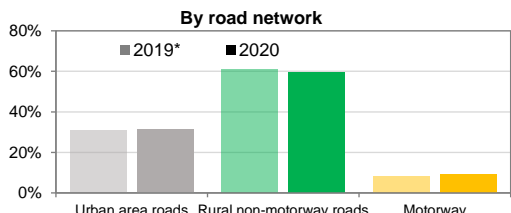
Number of injury accidents and victims (fatalities+injured) for the cumulative in June, July, August and September in mainland France



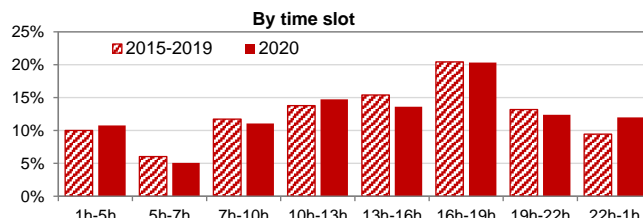
	Injury accidents	Victims	of which fatalities
2020	18 675	24 721	984
2015-2019	19 983	26 680	1 237
Difference	-1 308	-1 959	-1 010
Variation	-6,5%	-7,3%	-20,4%

During the 4-month period, the number of fatalities fell more sharply than the number of accidents or victims.

Distribution of cumulative fatalities in June, July, August and September for 2015-2019 and 2020 in France mainland

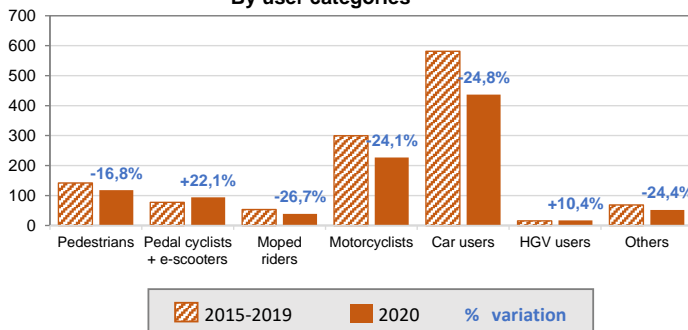


* due to the introduction of 80km/h on the rural non-motorway roads in 2018, the comparison is with the year 2019.



Cumulative number of fatalities in June, July, August and September for 2015-2019 and 2020 in France mainland

By user categories



Overall fatalities decreased by -20% during the period from June to September 2020 compared to the average of the last 5 years.

Fatalities among car users and motorcyclists contributed the most to the decrease (3/5 and 1/3 respectively). Pedestrian fatalities fell slightly less (-17%).

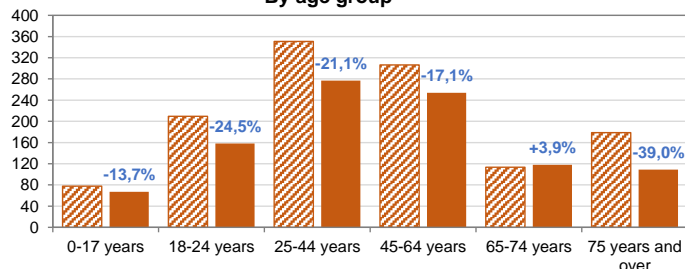
Fatalities among cyclists and users of motorised transport vehicles (e-scooters) are increasing (+22%).

Fatalities among 18-24 year olds and 25-44 year olds fell more than the overall decrease, contributing 1/5 and 1/3 respectively. The fall in fatalities among 45-64 year olds is less pronounced, but accounts for 1/5 of the overall fall. The fall in fatalities among those aged 75 and over is the greatest (-39%) and represents more than a third of the overall fall.

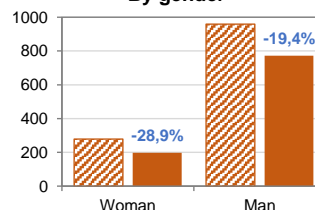
Only fatalities among the 65-74 year olds are increasing (+4%).

Over the last five years, women's fatalities have been much lower than men's, and have fallen more than men's (-29%). This decrease represents less than 1/3 of the overall decrease.

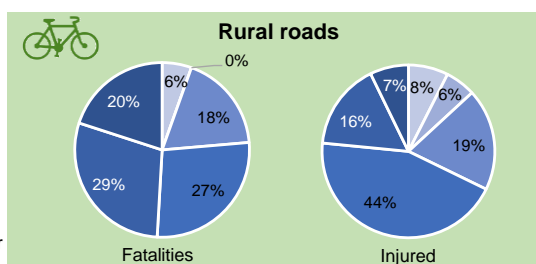
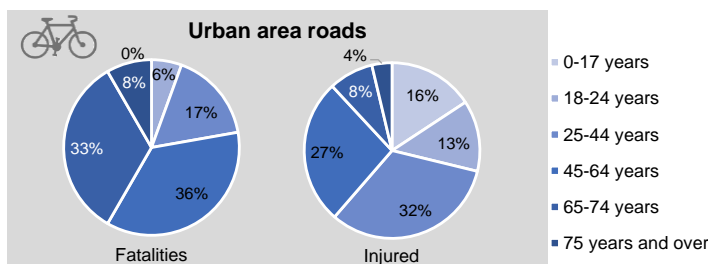
By age group



By gender



Cyclists fatalities and injured, cumulative from June to September 2020 in France mainland



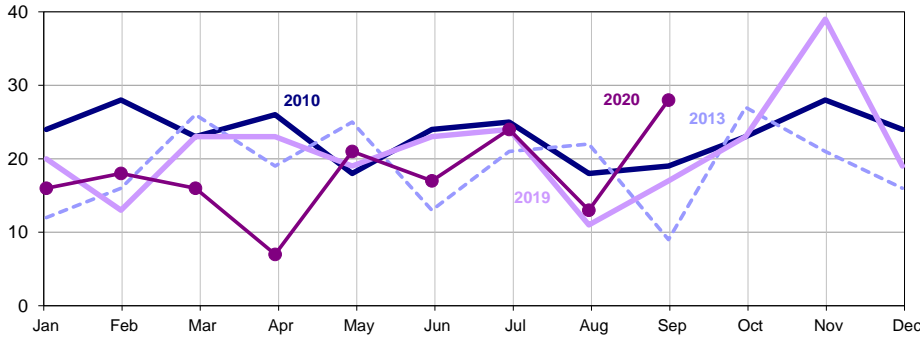
In 2020, 94 cyclists were killed over 4 months (39 on urban area roads and 55 on rural roads) compared to 78 fatalities (40 and 38 respectively) in 2019. The number of cyclists fatalities increased by 46% on rural roads between 2019 and 2020, but was stable on urban area roads. The number of injured cyclists increases by around +15% both on urban area and rural roads (provisional results).

On urban area roads, 69% of cyclist fatalities are between 45 and 74 years old, compared with 56% on rural roads. 29% of the injured are under 25 years of age, compared with 14% on rural roads. On rural roads, 20% of cyclist fatalities are aged 75 or over, compared with 8% on urban area roads, and 44% of the injured are aged between 45 and 64, compared with 27% on urban area roads.

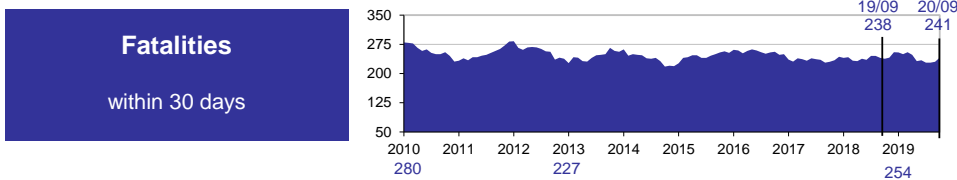
As part of the implementation of the new information system, data on hospitalised injuries are not disseminated because they are incomplete

Road traffic fatalities in September 2020 are rising, with 28 people killed (+11) compared to September 2019.

Fatalities within 30 days by month



Cumulative fatalities rolling 12 months



Fatalities

within 30 days

Month report

259 injury accidents
in September

+19,4% compared with 2019,
+42 accidents

341 victims
on road traffic in September

+16,0% compared with 2019,
+47 victims

313 injured
in September

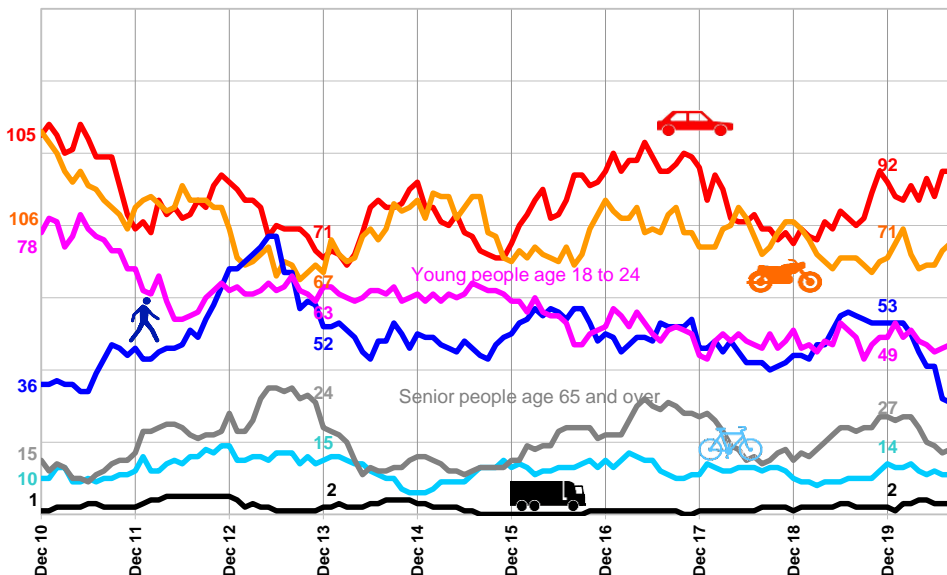
-2,1% compared with 2019,
-3 injured

28 fatalities
in September

+64,7% compared with 2019,
+11 fatalities

	September				Since the beginning of the year				On a rolling 12 months			
	2020	2019	Difference	Evolution	2020	2019	Difference	Evolution	2020	2019	Difference	Evolution
Accidents	259	217	+ 42	+19,4 %	1 857	2 057	- 200	-9,7 %	2 624	2 790	- 166	-5,9 %
Victims	341	294	+ 47	+16,0 %	2 437	2 866	- 429	-15,0 %	3 500	3 908	- 408	-10,4 %
Fatalities	28	17	+ 11	+64,7 %	160	173	- 13	-7,5 %	241	238	+ 3	+1,3 %
Injured	313	277	+ 36	+13,0 %	2 277	2 693	- 416	-15,4 %	3 259	3 670	- 411	-11,2 %

Development of the number of users fatalities cumulated on a rolling 12 months



Number users fatalities cumulated on a rolling 12 months, in

September 2020
% compared with 2010

Car users
102 ; -3%

PTW
80 ; -25%

Pedestrians
32 ; -11%

Young people
50 ; -36%

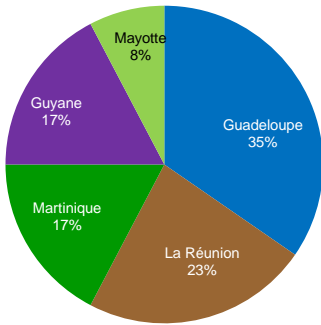
Senior people
17 ; +13%

Pedal cyclists
10 ; +0%

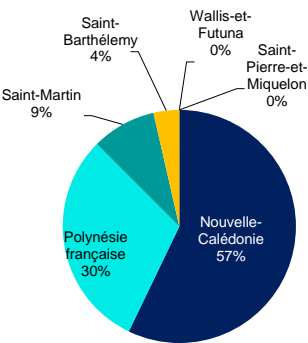
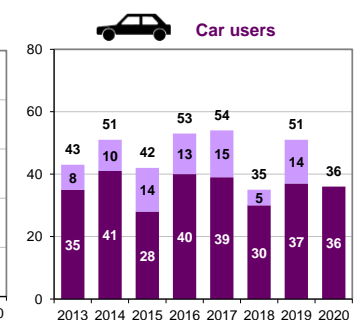
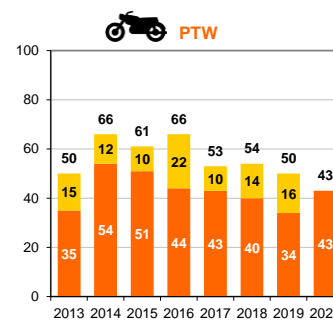
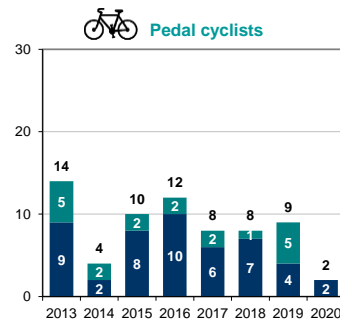
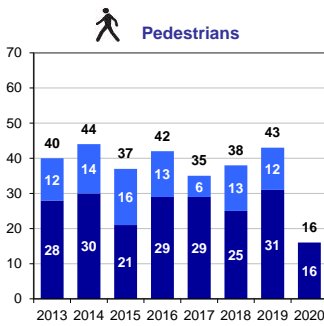
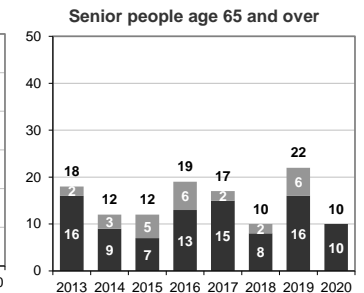
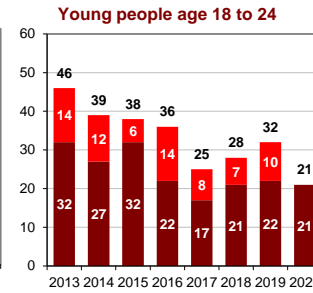
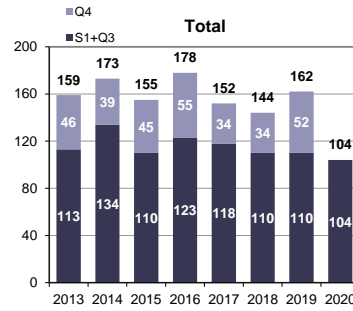
HGW Users
3 ; +200%

Road traffic fatalities variation by users categories by quarterly for each year

French overseas counties



104 fatalities in 2020



56 fatalities in 2020

