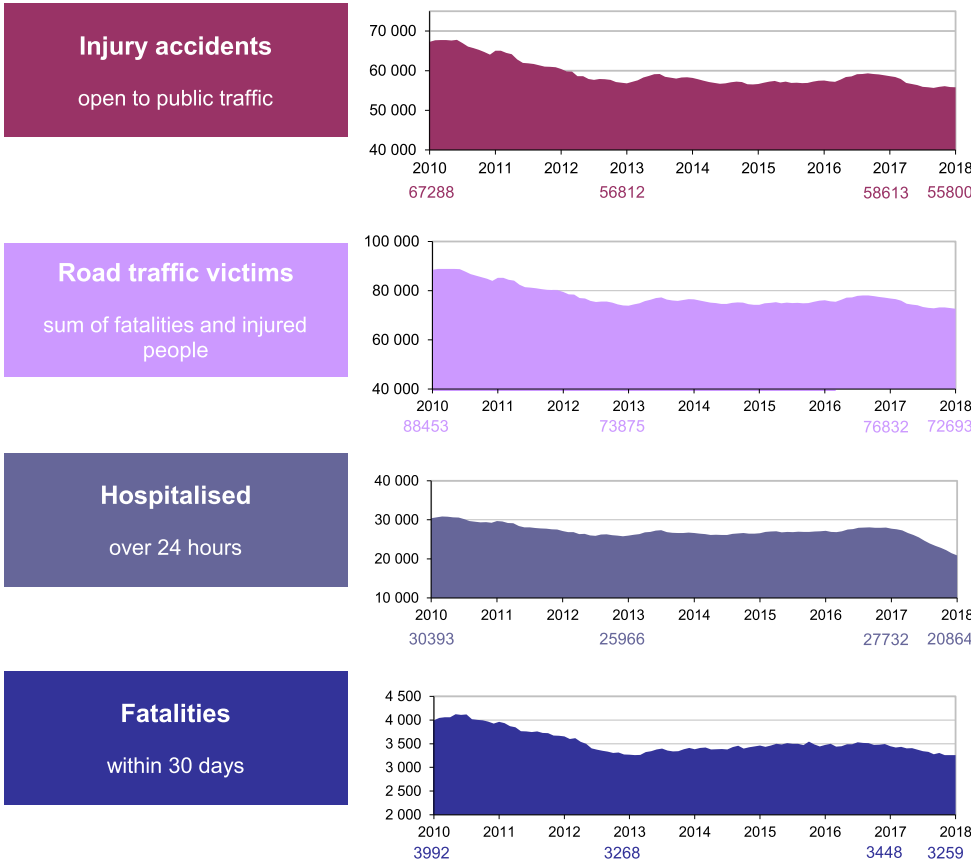


In December 2018, road traffic fatalities are stable compared with December 2017. Pedal cyclists and pedestrians fatalities decrease slightly while those of motorcyclists and moped riders increase.

Cumulative rolling 12 months



Month report

4 626 injury accidents
in december

-1.6% compared with 2017,
- 73 accidents

6 010 victims
on road traffic in december

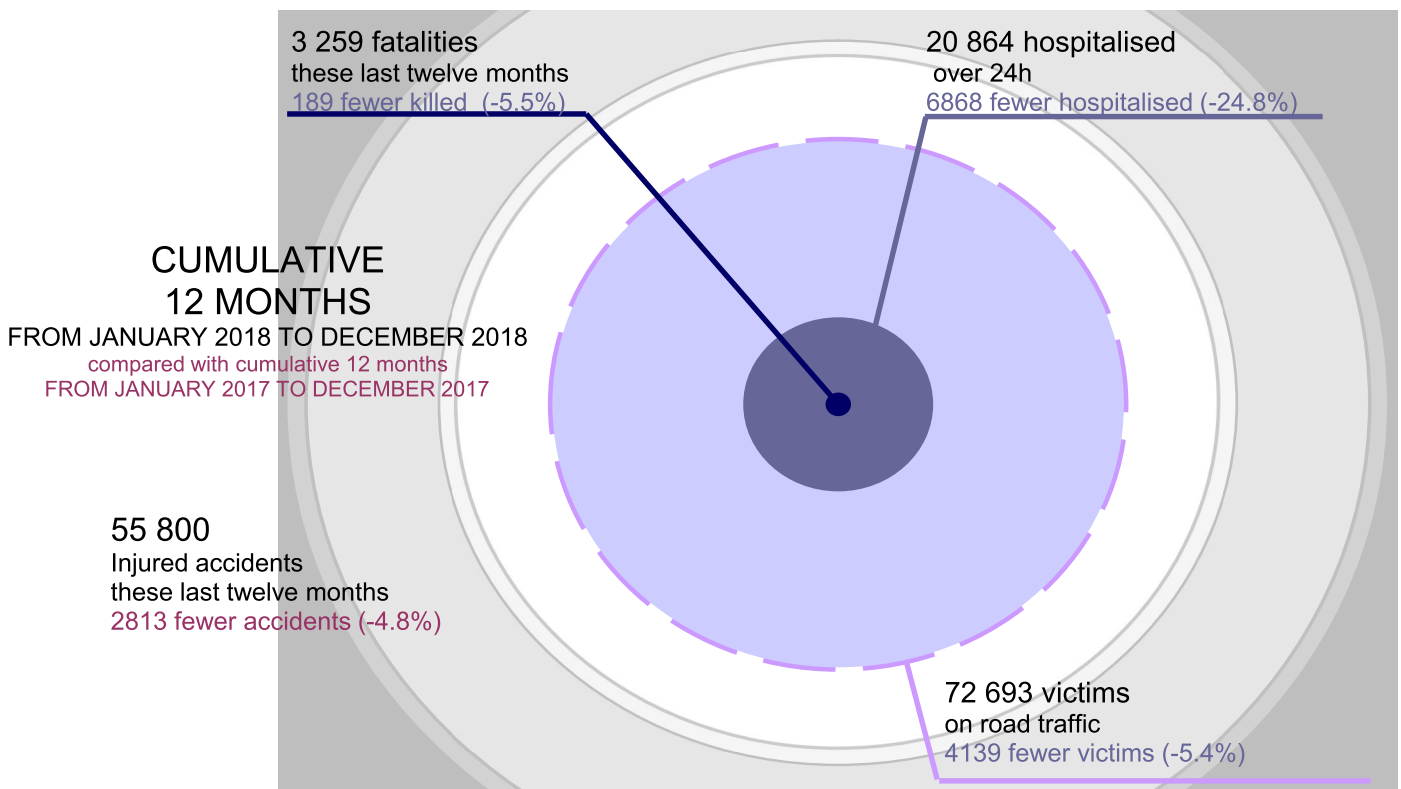
-3.9% compared with 2017,
- 254 injured people

1 532 hospitalised
over 24h in december

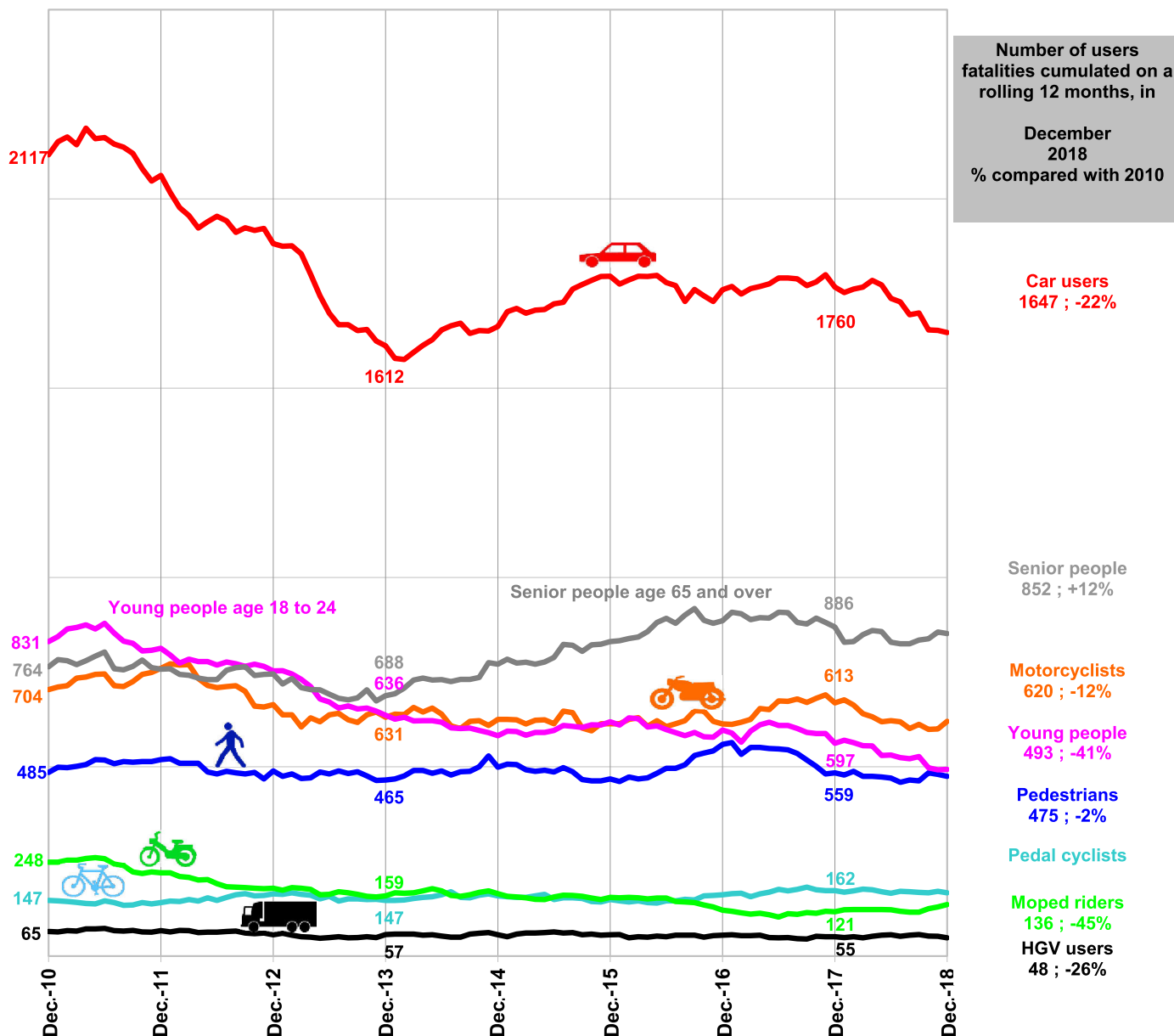
-11.4% compared with 2017,
- 271 hospitalised people

292 fatalities
in december

+0.0% compared with 2017,
+ 0 fatality



Development of the number of users fatalities cumulated on a rolling 12 months



Cumulative 12 months comparaison Jan.2018-Dec.2018 with Dec.2017-Nov.2018

Motorcyclists and moped driver fatalities increase this month of December 2018 compared to December 2017. Car users fatalities are stable, pedestrians and cyclists fatalities slightly decrease.

The number of fatalities among young adults and senior people age 65 and over is stable.

Cumulative 12 months comparaison Jan.2018-Dec.2018 with Jan.2017-Dec.2017, with 2010 and with 2013

Compared to the situation a year ago, car users and motorcyclists fatalities decrease (-7%), evolving as follows : -22% and -12% compared with the whole of 2010. Cyclists and pedestrians fatalities decrease compared with those of a year ago (-3% and -2%), evolving as follows : +14% and -2% compared with the whole of 2010.

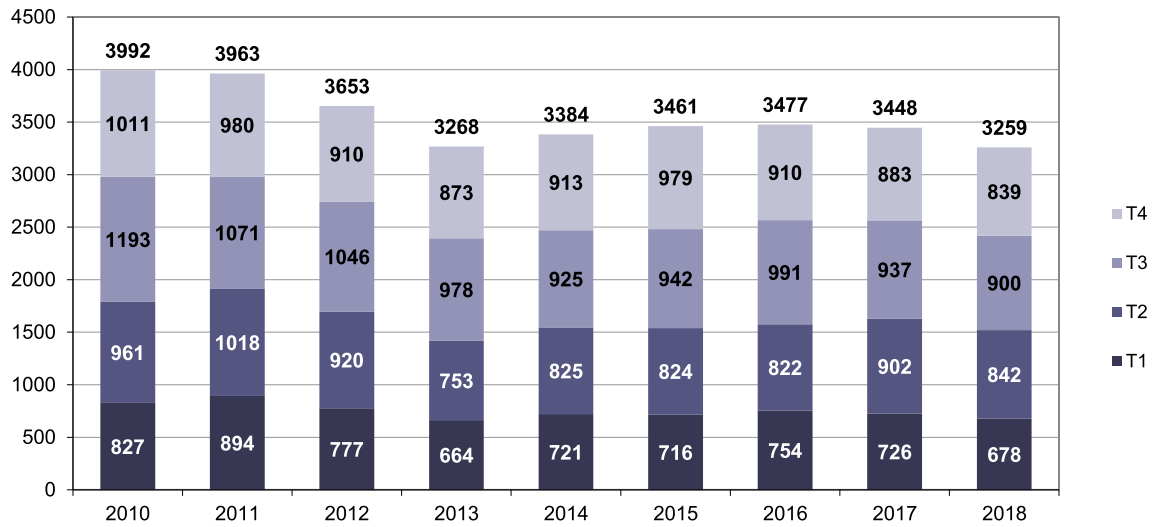
In contrast, fatalities among moped riders rise, but remain -45% below the whole year of 2010.

Fatalities among young adults strongly decrease by -12%, and by -41% compared to the whole year 2010, representing 338 fewer young people killed and -22% compared to the whole year 2013, representing 143 fewer young people killed.

The number of fatalities among senior people age 65 and over, decreases by -2% compared with a year ago, but is higher than for the whole years of 2010 and 2013 (+12% and +24%), representing 88 and 164 additional senior people have been killed in the last twelve months compared with 2010 and 2013.

Road traffic fatalities variation by quaterly for each year

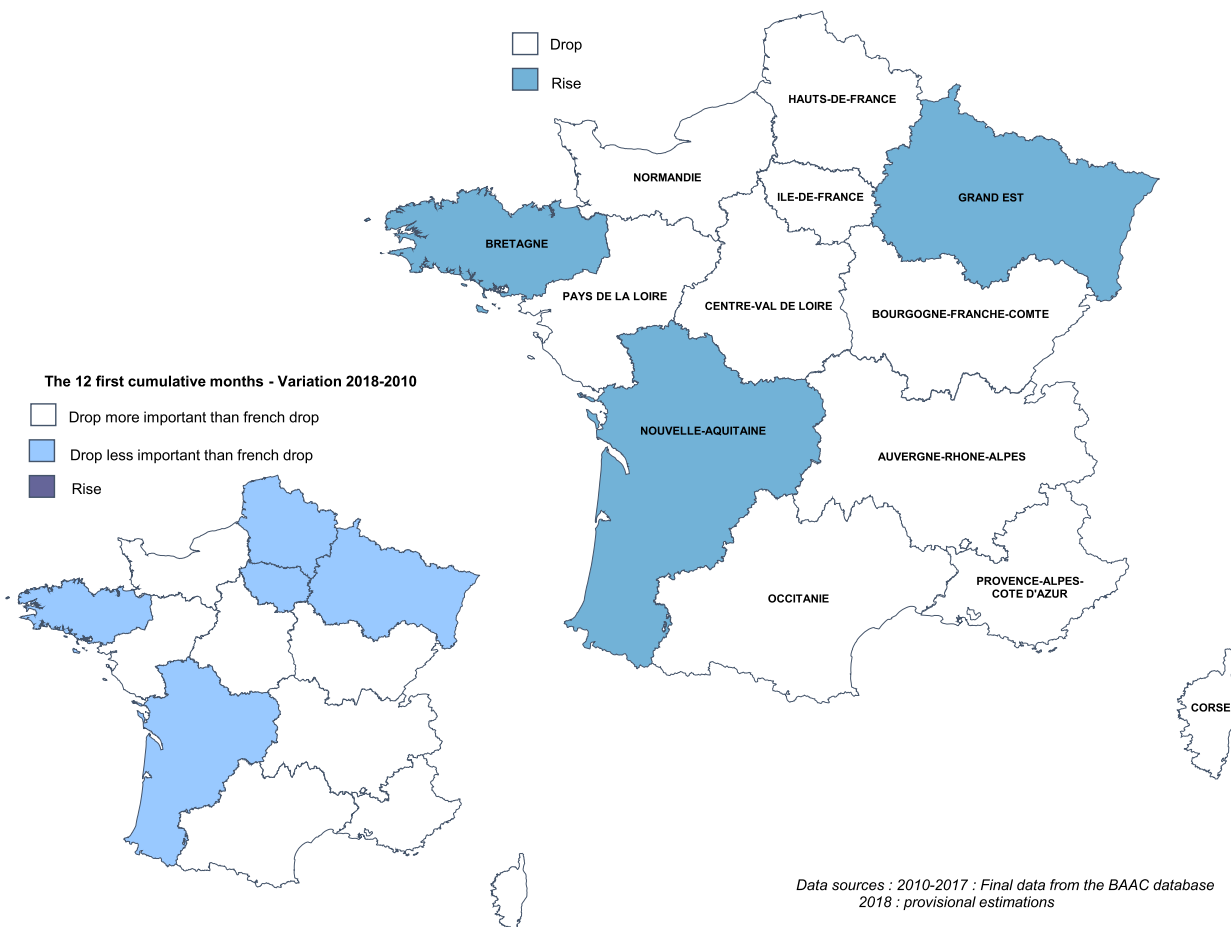
In the 4th quarter of 2018, road traffic fatalities are the lowest of this decade : 839 people died in 2018, compared with 883 in 2017, decrease of -5,0%, or 44 fewer people killed. This decrease mainly concerns car users (52 fewer people killed), while pedestrians, moped riders and motocyclists fatalities increase (8, 20 and 8 additional people killed).



Data sources : 2010-2017 : Final data from the BAAC database
2018 : provisional estimations

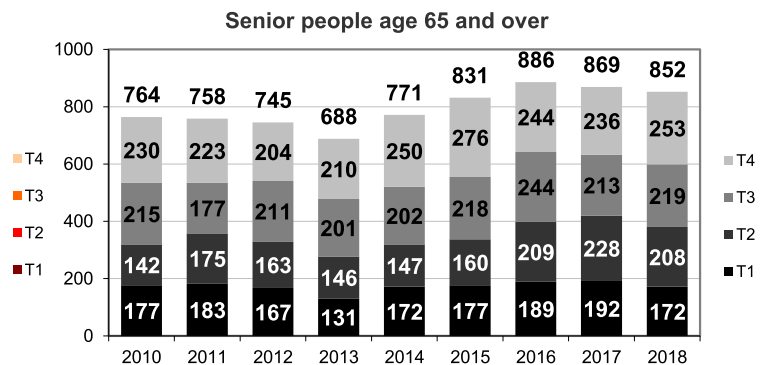
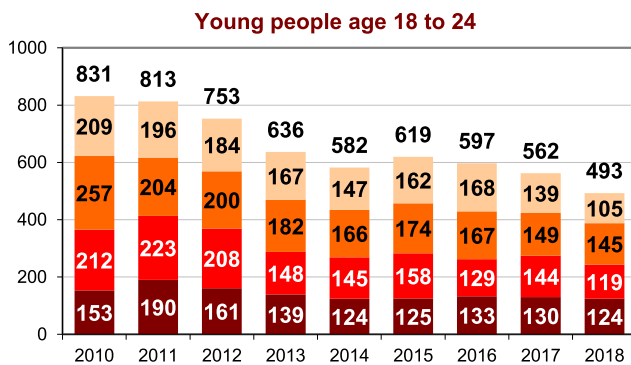
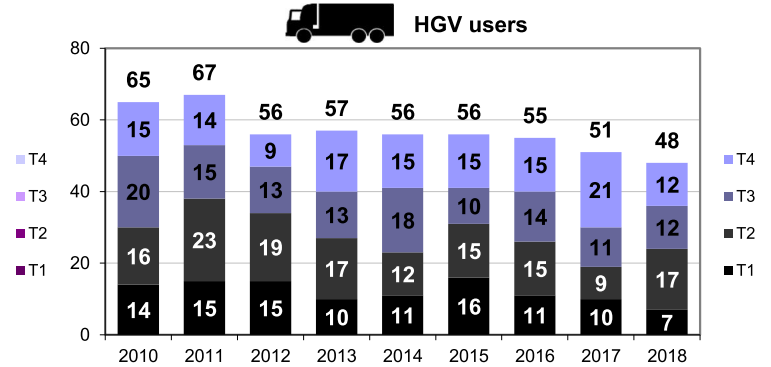
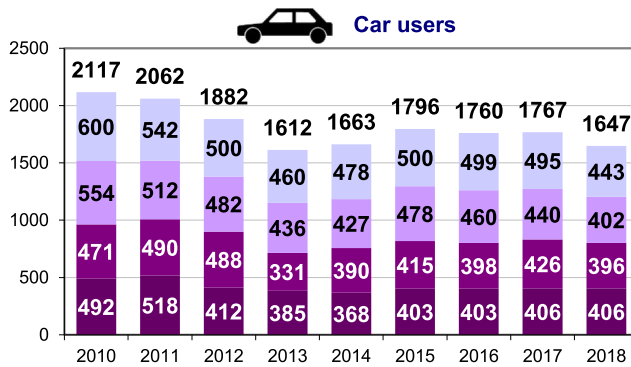
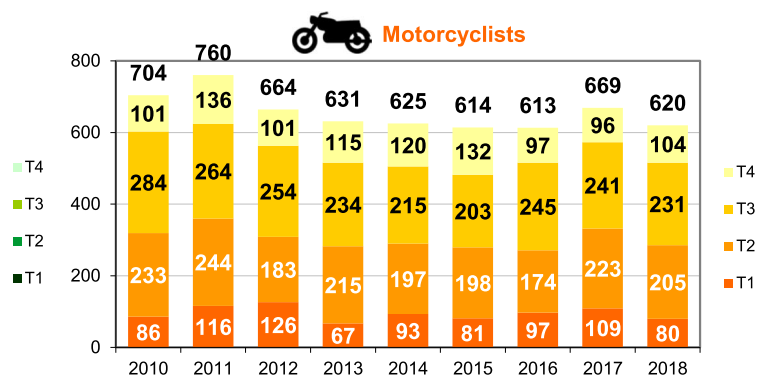
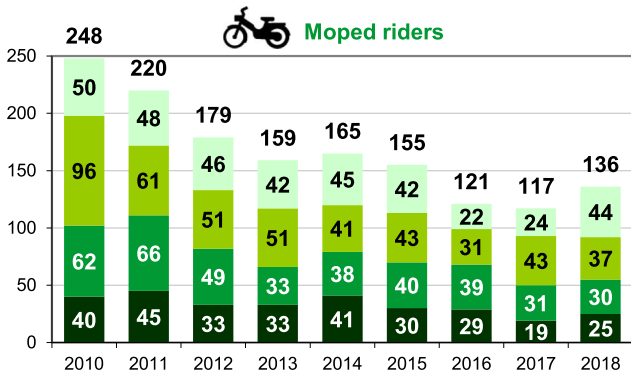
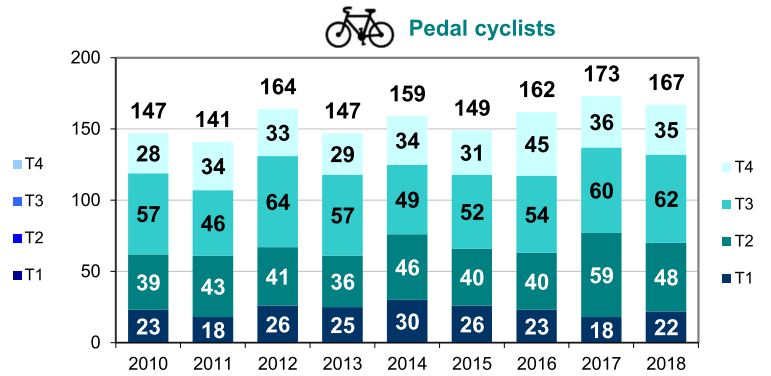
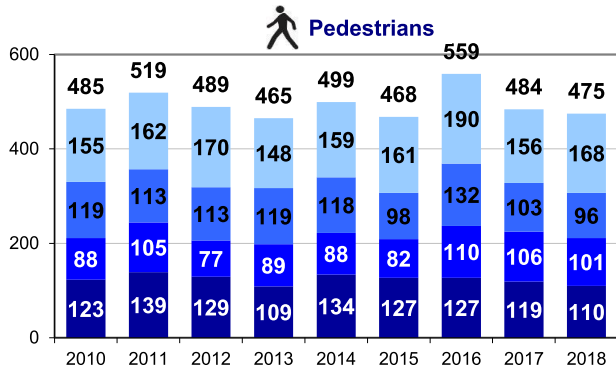
Territorial report

The 12 first cumulative months - Variation 2018-2017



Data sources : 2010-2017 : Final data from the BAAC database
2018 : provisional estimations

Road traffic fatalities variation by user categories by quarterly for each year

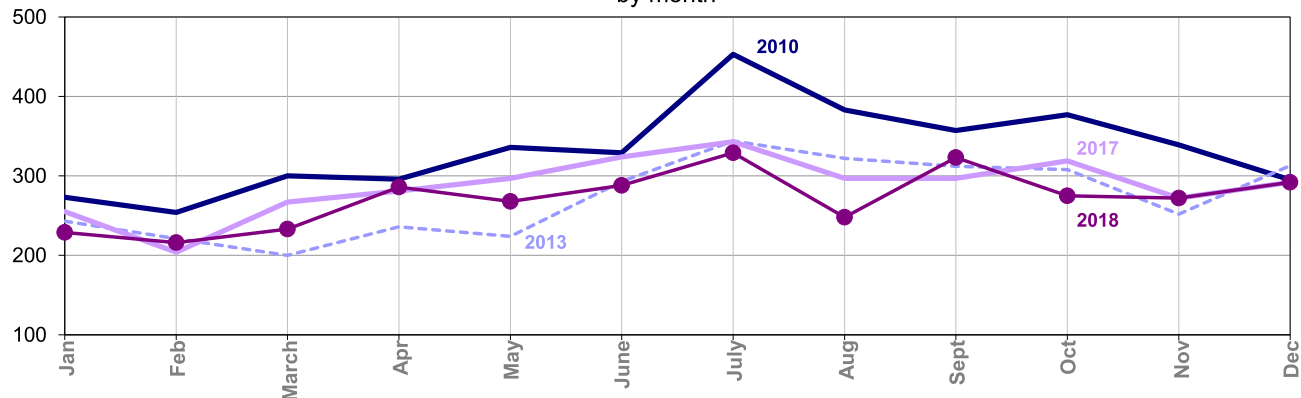


Data sources : 2010-2017 : Final data from the BAAC database
2018 : provisional estimations

	December				Since the beginning of the year				On a rolling 12 month			
	2018	2017	Difference	Variation	2018	2017	Difference	Variation	2018	2017	Difference	Variation
Accidents	4 626	4 699	- 73	-1.6 %	55 800	58 613	-2 813	-4.8 %	55 800	58 613	-2 813	-4.8 %
Victims	6 010	6 219	- 209	-3.4 %	72 693	76 832	-4 139	-5.4 %	72 693	76 832	-4 139	-5.4 %
Fatalities	292	292	+ 0	+0.0 %	3 259	3 448	- 189	-5.5 %	3 259	3 448	- 189	-5.5 %
Injured	5 718	5 927	- 209	-3.5 %	69 434	73 384	-3 950	-5.4 %	69 434	73 384	-3 950	-5.4 %
SI	1 532	2 101	- 569	-27.1 %	20 864	27 732	-6 868	-24.8 %	20 864	27 732	-6 868	-24.8 %



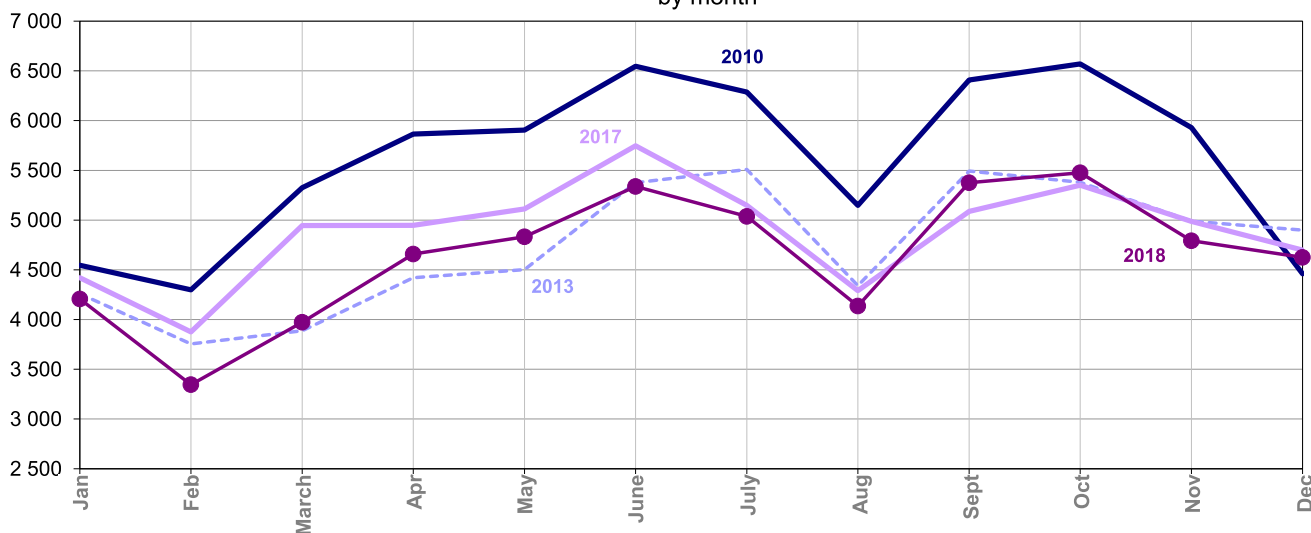
Fatalities within 30 days by month



	Jan	Feb	March	Apr	May	June	July	Aug	Sept	Oct	Nov	Dec
2010	273	254	300	296	336	329	453	383	357	377	339	295
2011	324	269	301	360	322	336	354	370	347	351	296	333
2012	297	204	276	277	321	322	366	339	341	299	292	319
2013	243	221	200	236	224	293	344	322	312	308	252	313
2014	235	225	261	254	260	311	302	306	317	347	280	286
2015	262	235	219	258	267	299	353	332	257	378	296	305
2016	236	263	255	243	294	285	356	301	334	315	258	337
2017	255	204	267	281	297	324	343	297	297	319	272	292
2018	229	216	233	286	268	288	329	248	323	275	272	292



Injury accidents by month



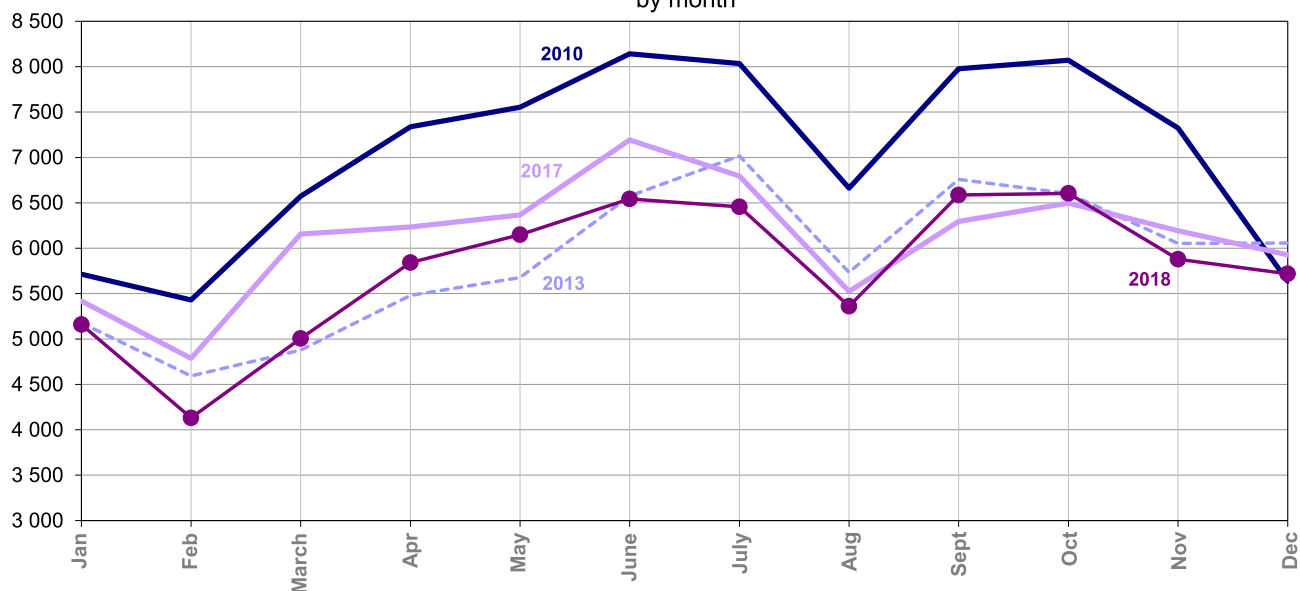
	Jan	Feb	March	Apr	May	June	July	Aug	Sept	Oct	Nov	Dec
2010	4 545	4 299	5 326	5 866	5 904	6 546	6 288	5 147	6 408	6 570	5 929	4 460
2011	4 912	4 357	5 333	5 744	6 098	5 722	5 415	4 748	5 976	5 995	5 253	5 471
2012	4 900	3 810	5 034	4 426	5 193	5 597	5 275	4 398	5 685	5 898	5 175	5 046
2013	4 259	3 755	3 887	4 420	4 503	5 376	5 509	4 341	5 493	5 381	4 989	4 899
2014	4 649	4 091	4 609	4 825	4 958	5 435	4 769	4 100	5 324	5 627	5 055	4 749
2015	4 277	3 709	4 273	4 637	4 741	5 528	5 041	4 279	5 200	5 085	4 998	4 835
2016	4 655	3 958	4 414	4 293	4 967	5 182	5 080	4 166	5 255	5 451	5 201	4 900
2017	4 420	3 876	4 946	4 948	5 112	5 747	5 148	4 291	5 088	5 351	4 987	4 699
2018	4 207	3 345	3 974	4 659	4 833	5 339	5 037	4 136	5 375	5 476	4 793	4 626

NB : In purple in the table, provisional estimations (Extrapolated data from Quick Reporting).

In blue, quasi definitive data.

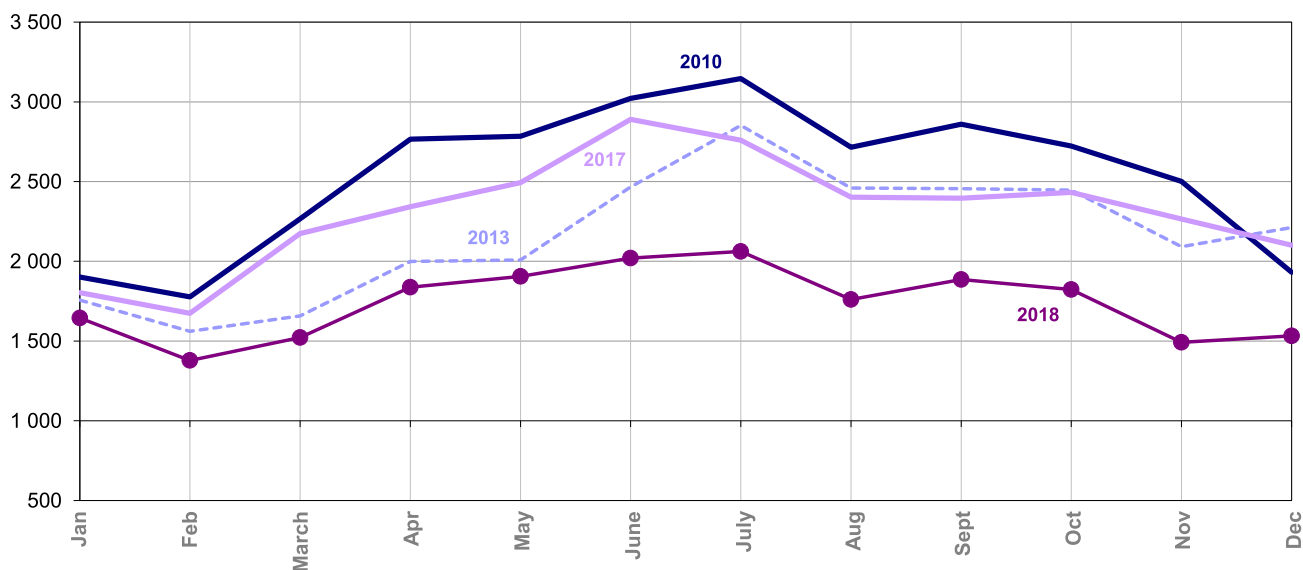
In balck, final data from the BAAC database.

Total victims (killed + injured) by month



	Jan	Feb	March	Apr	May	June	July	Aug	Sept	Oct	Nov	Dec
2010	5 715	5 430	6 573	7 338	7 554	8 142	8 034	6 663	7 978	8 072	7 325	5 637
2011	6 025	5 478	6 553	7 256	7 519	7 165	7 036	6 101	7 346	7 474	6 440	6 858
2012	6 095	4 705	6 244	5 602	6 593	6 981	6 792	5 759	7 134	7 355	6 419	6 172
2013	5 178	4 593	4 878	5 481	5 678	6 576	7 017	5 735	6 759	6 602	6 053	6 057
2014	5 720	5 091	5 697	5 953	6 316	6 850	6 146	5 433	6 608	6 933	6 312	5 989
2015	5 260	4 685	5 296	5 771	5 968	6 857	6 545	5 570	6 534	6 285	6 022	6 009
2016	5 915	4 839	5 459	5 354	6 273	6 627	6 622	5 463	6 530	6 855	6 527	6 181
2017	5 419	4 787	6 156	6 233	6 367	7 193	6 795	5 523	6 295	6 497	6 192	5 927
2018	5 159	4 132	5 005	5 843	6 148	6 543	6 457	5 360	6 586	6 604	5 879	5 718

Hospitalised people more than 24h



	Jan	Feb	March	Apr	May	June	July	Aug	Sept	Oct	Nov	Dec
2010	1 902	1 777	2 267	2 766	2 784	3 021	3 146	2 715	2 860	2 723	2 501	1 931
2011	2 142	1 978	2 232	2 614	2 726	2 614	2 659	2 540	2 715	2 745	2 319	2 395
2012	2 036	1 570	2 178	1 913	2 412	2 565	2 538	2 383	2 703	2 552	2 248	2 044
2013	1 757	1 561	1 657	1 999	2 008	2 466	2 852	2 459	2 456	2 447	2 092	2 212
2014	1 994	1 730	2 069	2 104	2 352	2 600	2 345	2 257	2 398	2 488	2 185	2 113
2015	1 819	1 615	1 844	2 173	2 273	2 621	2 622	2 384	2 478	2 356	2 179	2 231
2016	2 100	1 733	1 913	1 928	2 374	2 529	2 756	2 315	2 498	2 446	2 223	2 372
2017	1 804	1 674	2 174	2 342	2 494	2 890	2 759	2 402	2 395	2 432	2 265	2 101
2018	1 645	1 378	1 522	1 837	1 906	2 020	2 062	1 761	1 886	1 823	1 492	1 532

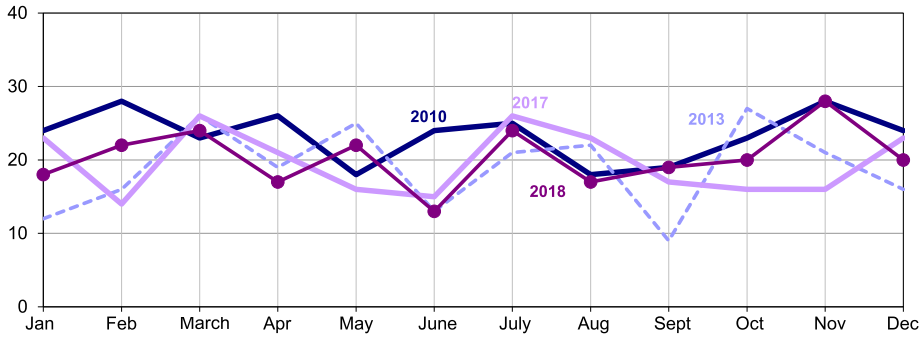
NB : In purple in the table, provisional estimations (Extrapolated data from Quick Reporting).

In blue, quasi definitive data

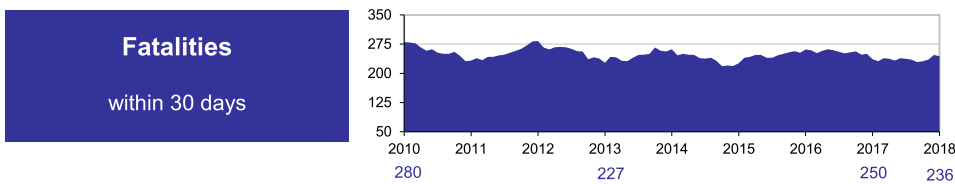
In black, final data from the BAAC database.

In December 2018, road traffic fatalities decrease compared to December 2017, representing 3 fewer people killed.

Fatalities within 30 days by month



Cumulative fatalities rolling 12 months



Month report

247 injury accidents
in december

+13.8% par rapport à 2017,
30 injury accidents

362 victims
on road traffic in december

+11.4% par rapport à 2017,
37 injured people

148 hospitalised
over 24h in december

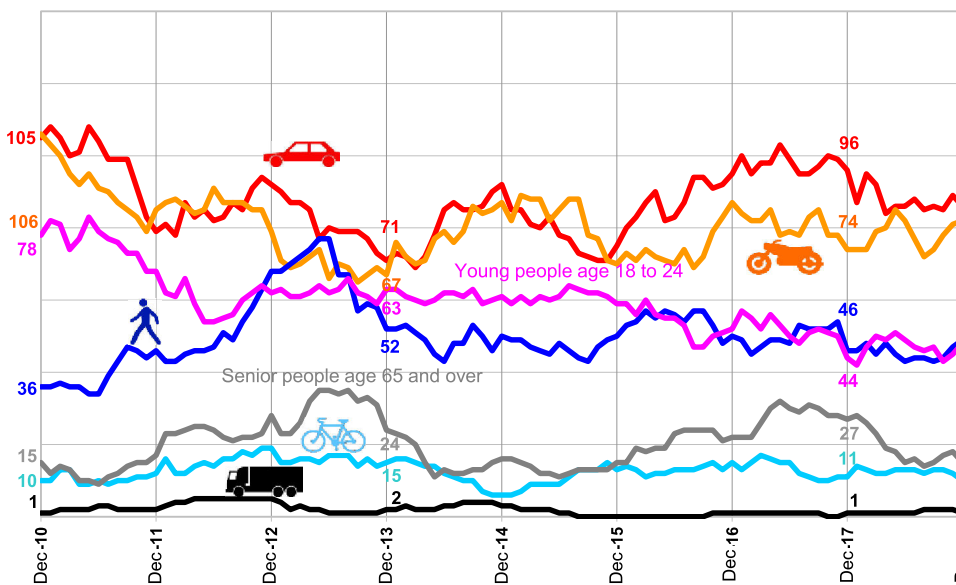
-6.9% par rapport à 2017,
-11 hospitalised people

20 fatalities
in december

-13.0% par rapport à 2017,
-3 fatalities

	December				Since the beginning of the year				On a rolling 12 month			
	2018	2017	Difference	Variation	2018	2017	Difference	Variation	2018	2017	Difference	Variation
Accidents	247	217	+ 30	+13.8 %	2 563	2 611	- 48	-1.8 %	2 563	2 611	- 48	-1.8 %
Victimes	362	325	+ 37	+11.4 %	3 597	3 692	- 95	-2.6 %	3 597	3 692	- 95	-2.6 %
Tués	20	23	- 3	-13.0 %	244	236	+ 8	+3.4 %	244	236	+ 8	+3.4 %
Blessés	342	302	+ 40	+13.2 %	3 353	3 456	- 103	-3.0 %	3 353	3 456	- 103	-3.0 %
BH	148	159	- 11	-6.9 %	1 323	1 681	- 358	-21.3 %	1 323	1 681	- 358	-21.3 %

Development of the number of users fatalities cumulated on a rolling 12 months



Number of users fatalities cumulated on a rolling 12 months, in

December
2018
% compared with 2010

Car users

86 ; -18%

2 WM

82 ; -23%

Pedestrians

49 ; +36%

Young people

48 ; -38%

Senior people

15 ; +0%

Pedal cyclists

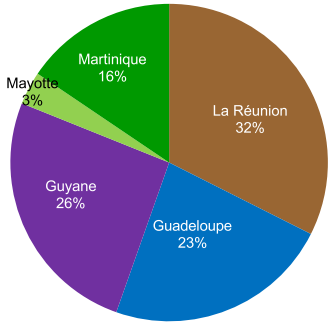
10 ; +0%

HGV users

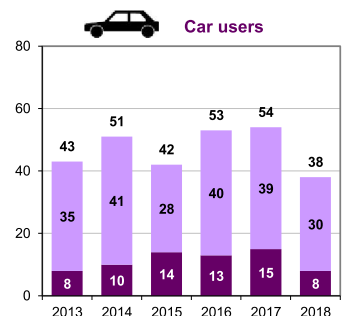
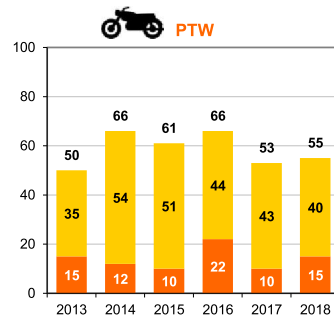
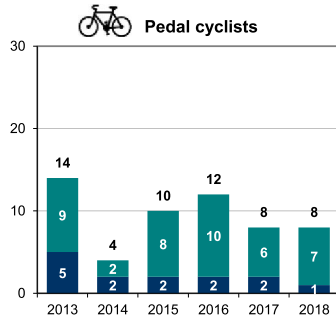
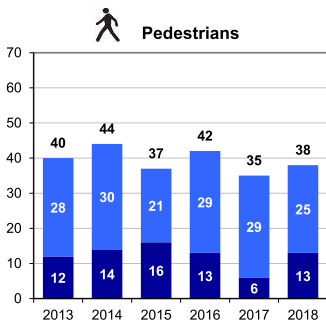
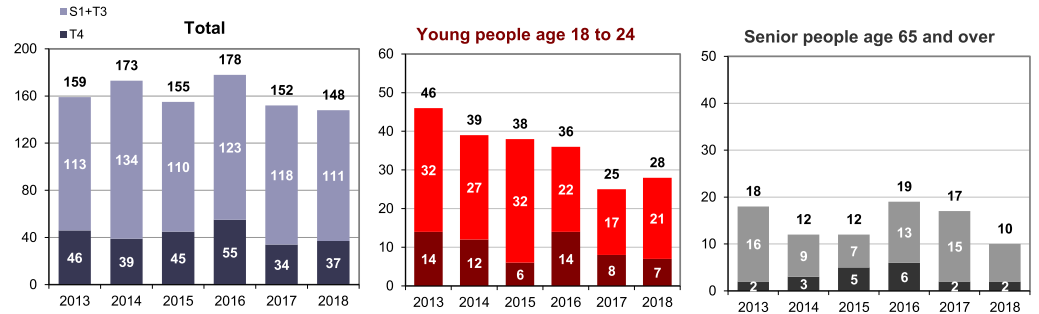
1 ; +0%

Road traffic fatalities variation by users categories by quaterly for each year

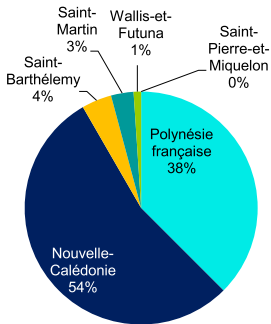
French overseas counties



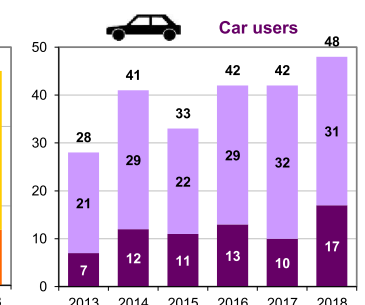
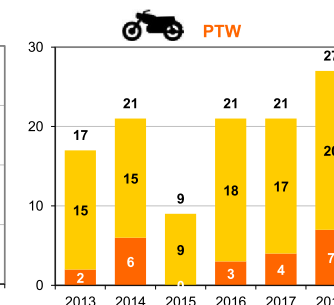
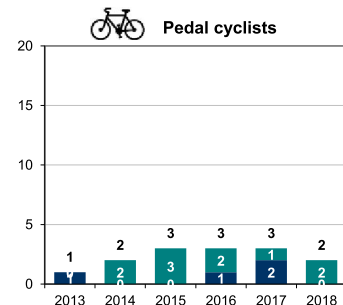
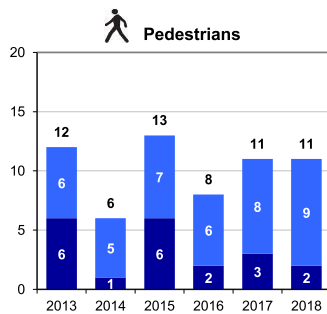
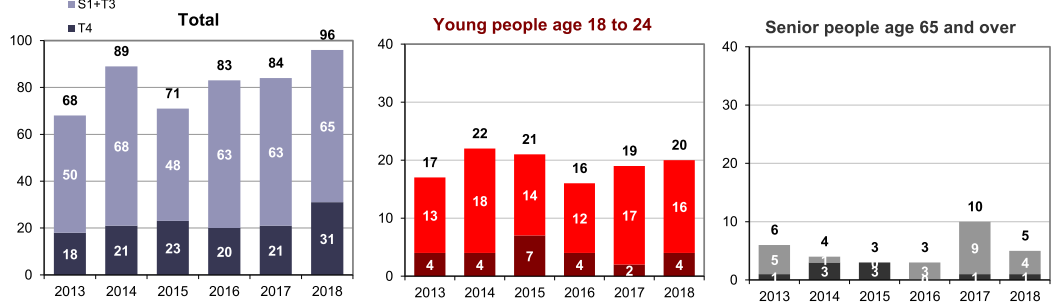
148 fatalities in 2018



French overseas local authorities and New-Caledonia



96 fatalities in 2018



Data sources : 2010 à 2017 : Final data from the BAAC database
2018 : provisional estimation